

ROLLON®
BY TIMKEN

Product
Portfolio



durbal



Who we are

Founded in 1975 in Milan, Italy, **Rollon** designs and manufactures **linear components, actuators and systems** for industrial motion, with a special focus on **tailored solutions** aimed at **innovating** and meeting the **evolving needs** of the market.

Rollon's solutions are globally adopted in industrial automation, aerospace, medical equipment, material handling, and other sectors where product **performance, efficiency** and **reliability** are essential.

ROLLON[®]
BY TIMKEN

The Group

In 2018, **Rollon** was acquired by **The Timken Company** and became the flagship brand for linear motion within the Industrial Motion division of Timken.

In 2023, **Timken** acquired **Nadella, Chiavette Unificate, Durbal, Shuton-Ipiranga,** and **Rosa Sistemi**, scaling Rollon's portfolio and promoting new operational synergies and geographical expansion opportunities.

Thanks to that, **Rollon** is now able to offer an even more comprehensive product range: from **linear components, actuators and systems** to **ball screws** and **rotational units**.

At a glance

11

Countries

14

Manufacturing sites

+60k

Production area sqm

TIMKEN

ROLLON[®] BY TIMKEN

NADELLA

durbal

ROSA[®]
SISTEMI

SHUTON
IPIRANGA

 *chiavette
unificate*

6

Brands

+1200

Employees

+250m

Revenue EUR



Our portfolio

Rollon offers a comprehensive product range that includes **linear guides, telescopic rails, ball screws, needle bearings, rod ends, actuators and systems, and robot transfer units.**

Whether you find the perfect fit within our portfolio or you look for a solution tailored to your needs our engineering teams all around the world are ready to offer extensive technical competence and deep vertical industry knowledge.



> Linear components

The linear components product range encompasses a wide range of linear, telescopic and curved guides.

> Actuators and systems

The actuators and systems product range includes actuators, multi-axes, robot transfer unit and circular systems.



> Ball screws

The ball screws product range includes a full range of high precision, high load and transport ball screws.



> Rotational units

The rotational units portfolio features rod ends, spherical plain bearings and needle bearings.

Linear components

> Linear guides

Linear guides with balls or rollers bearings, with hardened raceways, high load capacities, self-alignment and capable of working in dirty environments.

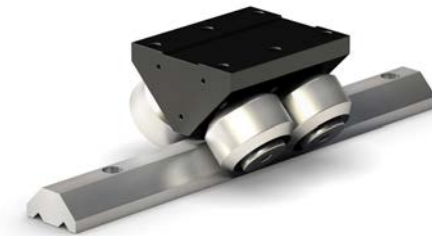
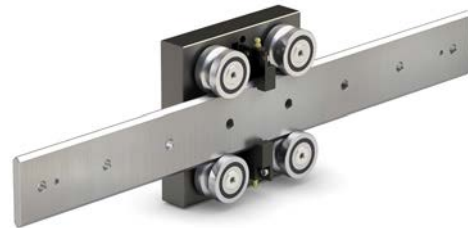
> Telescopic rails

Telescopic rails with balls or rollers bearings, for partial, total or extended extraction up to 200% of the length of the guide.

> Curved guides

Curved guides with roller bearings, with hardened raceways, high load capacities and capable of working in dirty environments.

Linear guides



Product
brands

Telescopic rails



Curved guides



Actuators and systems

> Actuators

Linear actuators built from aluminum or steel, offered with a variety of linear guide technologies and drive mechanisms, such as belt, ball screws, or rack and pinion systems.

> Multi-axis

XYZ combined linear units in aluminum and steel.

> Robot transfer units

Full spectrum of steel and aluminum solutions, accommodating all sizes of robotic arms.

> Circular systems

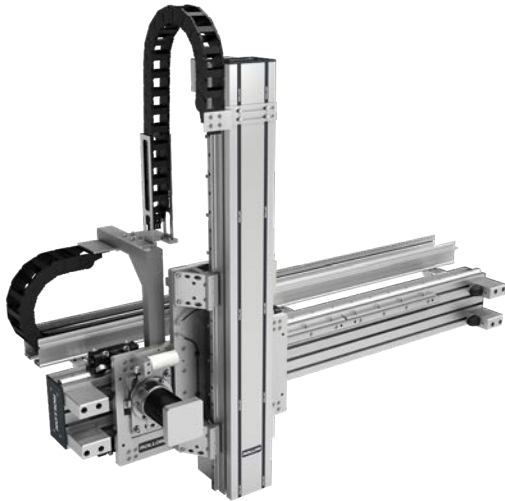
Precision linear motion solution that combines flexibility and ease of installation for linear motion circuits.

Actuators



Product
brands

Multi-axis



Robot transfer units



Circular systems



Ball screws

> XP

Xtrem Position high performance ball screws are designed for production technologies, with special focus on the linear drives in all high precision positioning applications.

> XL

Xtrem Load high dynamics and high load ball screws are designed for heavy duty applications, with special focus on high load actuators in injection molding, energy, elevation systems and presses among others.

> XT

Xtrem Transport high efficiency ball screws are designed for automation applications and are offered in precision and rolled options.

XP Xtrem Position



Product
brands

XL Xtrem Load



XT Xtrem Transport



Rotational units

> Needle roller bearings

High precision components with needle rollers, especially suitable for high radial load applications with limited space.

> Rod ends & spherical plain bearings

The rod ends and spherical plain bearings are especially designed for the efficient transmission of static and dynamic forces, along with enabling rotary, oscillatory, and tipping movements.

Needle roller bearings



Rod ends

Spherical plain bearings

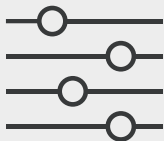


myRollon

myRollon is your digital working platform for linear guides, telescopic slides, actuators and actuator systems.

With myRollon, it is possible to determine the best linear motion solution according to your application specifications.

Features



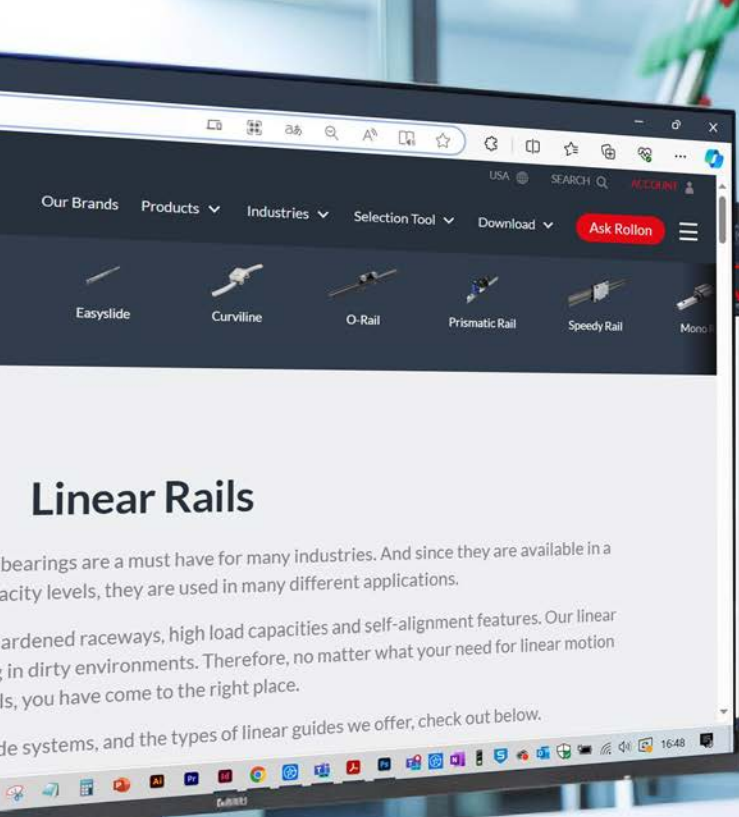
Selection tool



Tech support

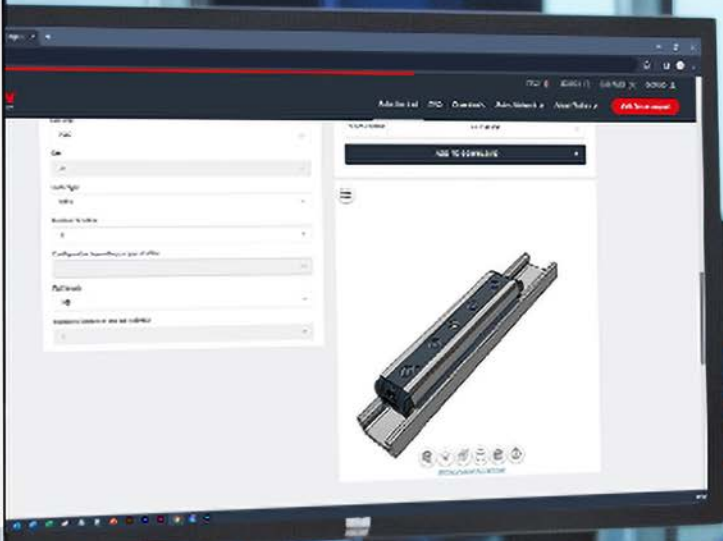


Technical report



Linear Rails

Linear bearings are a must have for many industries. And since they are available in a wide range of capacity levels, they are used in many different applications. They offer low friction, hardened raceways, high load capacities and self-alignment features. Our linear bearings are suitable for use in dirty environments. Therefore, no matter what your need for linear motion solutions, you have come to the right place. Check out our different systems, and the types of linear guides we offer, check out below.



3D drawings



Literature download



visit myRollon



Your next project starts here

Whether you find the perfect fit within our comprehensive portfolio or need a solution tailored to your exact needs, our team of experts is here to support you.



Rollon Lab

RollonLab is a **specialized laboratory where we test and optimize new products** beyond their technical limits, through performance tests and strict quality controls.

In the RollonLab we also simulate different application scenarios to guarantee highly competitive customized products to the customer.

360-degree support

We provide solutions that cater to individual application needs, supporting our customers at every stage of the development process, up to commissioning. We offer targeted product training, prototypes of customized products, 2D and 3D drawings, as well as on-site assistance.



beyond motion

rollon.com

The content of this document and its use are subject to the general terms of sale of ROLLON available on the web site www.rollon.com