

"Tendomatic" - Tenditore fisso serie "RF" / "Tendomatic" - Tendeur fixe serie "RF" / Tendomatic fixed tensioners "RF" series

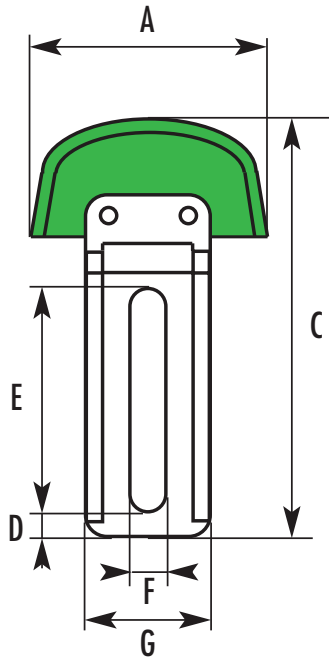


Fig. 76

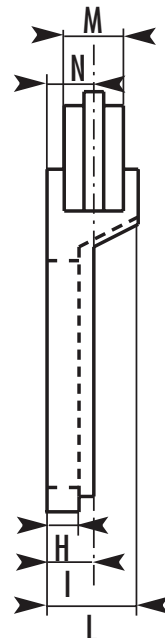


Fig. 77

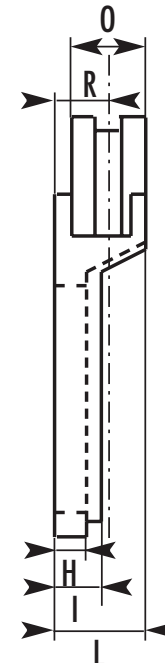


Fig. 78

Nostro tipo Notre type Our type	Misura catena Mesure chaîne Chain measure	Dimensioni in mm. / Dimension en mm. / Dimensions in mm.										Catena / Chaîne / Chain			
		A	C	D	E	F	G	H	I	L	N	R	S	D	T
RF.1	3/8" x 7/32"	69	138	10	73	10,5	40	10	15	30	15	15,00	20	20,0	
RF.1	1/2" x 5/16"	69	138	10	73	10,5	40	10	15	30	15	15,30	20	20,5	
RF.2	5/8" x 3/8"	89	164	12	85	12,5	50	12	18	36	18	19,50	22	25,0	
RF.2	3/4" x 7/16"	89	164	12	85	12,5	50	12	18	36	18	21,75	22	29,5	
RF.3	1" x 17mm	109	173	13	82	12,5	60	14	20	40	20	30,50	25	46,0	
RF.3	1 1/4" x 3/4"	109	173	13	82	12,5	60	14	20	40	20		25		
RF.3	1 1/2" x 1"	109	173	13	82	12,5	60	14	20	40	20		25		

**Esempio d'ordine:

Tenditori per catena doppia passo 1/2" = RF - 1/2" - D.
S= Sigla per catena semplice. - D= Sigla per catena doppia.

**Exemple de commande:

Tendeurs pour chaîne double pas 1/2" = RF - 1/2" - D.
S= Sigle pour chaîne simple - D = Sigle pour chaîne double.

**Order sample:

Tensioners for double chain with 1/2" pitch = RF - 1/2" - D.
S= symbol for single chain. - D = symbol for double chain.