



**Pignons et roues à moyeu SERAX  
pour chaines de transmission DIN 8187**

**Kettingwielen met SERAX klembussen  
voor rollenkettingen DIN 8187**

**Chain sprockets with SERAX  
bushings for roller chains DIN 8187**

**Kettenräder mit SERAX  
Klemmbuchsen für Rollenketten  
DIN 8187**

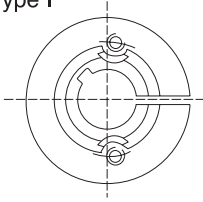
# Moyeux amovibles **SERAX**

**SERAX** klembussen

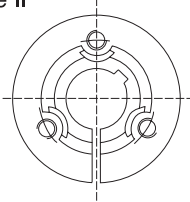
**SERAX** bushings

**SERAX** Spannbuchsen

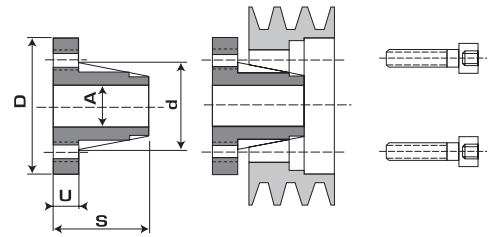
Type I



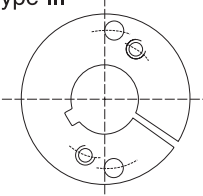
Type II



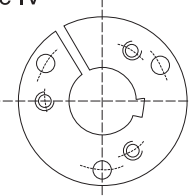
MONTAGE / ASSEMBLY «N»



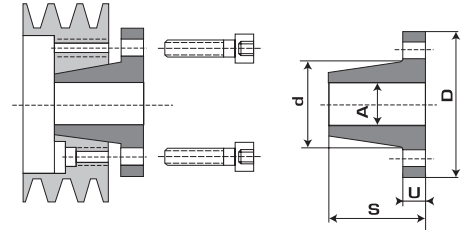
Type III

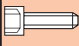


Type IV



MONTAGE / ASSEMBLY «R»



Reference-Referentie	d	D	S	U	Type	Montage assembling		A mm
2016	27	46	27	7	III	N+R	5 X 22	11-12-14-15-16-18-19-20-(22)-(24)-(25)
2825	39	58	37	8	III	N+R	6 X 30	11-12-14-15-16-18-19-20-22-24-25-26-28-30*
3030	45	65	45	11	I	N	8 X 35	11-12-14-15-16-18-19-20-22-24-25-26-28-30-32-35*
3825	51	70	37	8	III	N+R	6 X 30	12-14-15-16-18-19-20-22-24-25-26-28-30-32-35-36-38-40*
4035	56	85	50	11	I	N	10 X 40	12-14-15-16-18-19-20-22-24-25-26-28-30-32-35-36-38-40-42-45*
4830	64	88	45	11	III	N+R	8 X 35	14-15-16-18-19-20-22-24-25-26-28-30-32-35-36-38-40-42-45-48-50*
5040	68	100	58	13	I	N	12 X 45	18-19-20-22-24-25-26-28-30-32-35-36-38-40-42-45-48-50-55*
6035	79	110	53	13	III	N+R	12 X 40	18-19-20-22-24-25-26-28-30-32-35-38-40-42-45-48-50-55-60-65*
6045	80	110	63	13	I	N	12 X 50	18-19-20-22-24-25-26-28-30-32-35-38-40-42-45-48-50-55-60-65*
6543	80	110	58	13	I	N	12 X 50	25-28-30-32-35-38-40-42-45-48-50-55-60-65
7540	96	137	59	14	III	N+R	14 X 45	30-32-35-38-40-42-45-48-50-55-60-65-70-75-(80)
7060	98	140	79	14	I	N	14 X 65	30-32-35-38-40-42-45-48-50-55-60-65-70-75
8070	113	150	88	13	II	N	12 X 75	40-42-45-48-50-55-60-65-70-75-80-85
9560	123	165	80	15	IV	N	14 X 65	50-55-60-65-70-75-80-85-90-95-(100)
9560	123	165	80	15	IV	R	14 X 45	50-55-60-65-70-75-80-85-90-95-(100)
9085	126	165	105	15	II	N	14 X 90	50-55-60-65-70-75-80-85-90-95-(100)
10095	143	190	119	18	II	N	16 X 100	50-55-60-65-70-75-80-85-90-95-100
115105	161	210	130	18	II	N	18 X 110	55-60-65-70-75-80-85-90-95-100-105-110-115-120
130120	177	230	145	18	II	N	20 X 120	60-65-70-75-80-85-90-95-100-105-110-115-120-125-130
160140	220	300	180	34	II	N	22 X 160	80-85-90-95-100-105-110-115-120-125-130-140-150-160
200170	270	360	220	40	II	N	22 X 200	120-125-130-140-150-160-170-180-190-200

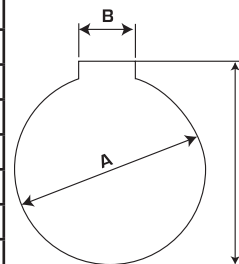
( ) sans rainure / zonder spienbaan / without keyway / Ohne Nut  
 en acier / klembus in staal / in steel / aus Stahl  
 \* rainure basse / verlaagde spienbaan / reduced keyway / Reduzierte Passfedernut

## Rainures de clavettes / Spiebanen / Keyways / Passfedernut DIN 6885 - ISO R773

## (\* ) Rainures de clavettes basses Verlaagde spiebanen Reduced keyway Reduzierte Passfedernut

A mm	B mm	T mm
11-12	4	A+1.8
14-15-16	5	A+2.3
18-19-20-22	6	A+2.8
24-25-26-28-30	8	A+3.3
32-35-36-38	10	A+3.3
40-42	12	A+3.3
45-48-50	14	A+3.8
55	16	A+4.3

A mm	B mm	T mm
60-65	18	A+4.4
70-75	20	A+4.9
80-85	22	A+5.4
90-95	25	A+5.4
100-105-110	28	A+6.4
115-120-125-130	32	A+7.4
140-150	36	A+8.4
160-170	40	A+9.4
180-190-200	45	A+10.4



A mm	B mm	T mm
30*	8	32.3
35*	10	37.2
40*	12	42.3
45*	14	46.8
50*	14	52.8
55*	16	56.8
65*	18	66.9

3/8" x 7/32"

(ØR 6.35mm)

06B-1

Pignons et roues à moyeu SERAX

pour chaînes de transmission

Kettingwielen met SERAX klembussen

voor rollenkettingen

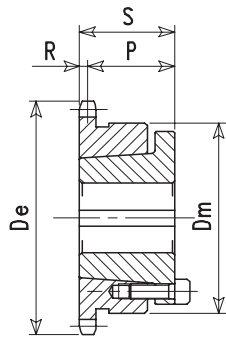
Chain sprockets with SERAX bushings

for roller chains

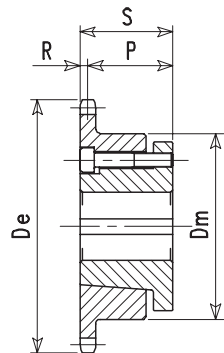
Kettenräder mit SERAX Spannbuchsen

für Rollenketten

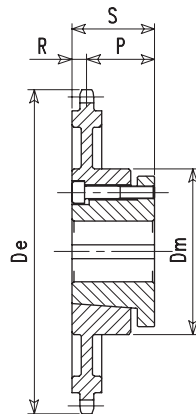
DIN 8187  
ISO/R606



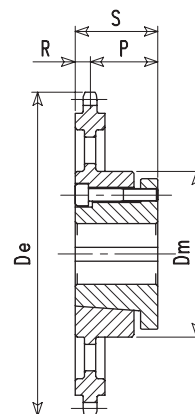
1



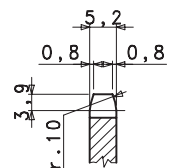
2




3




3A



SIMPLEX

Z	De		Type	P	R	S	Dm	kg	art. n°
15	50.0	2016	1	26.9	2.6	29.5	46	0.10	106BB106015
16	52.3	2016	1	26.9	2.6	29.5	46	0.11	106BB106016
17	55.4	2016	1	26.9	2.6	29.5	46	0.11	106BB106017
18	58.3	2016	1	24.4	2.6	27.0	46	0.15	106BB106018
19	61.2	2825	1	34.4	2.6	37.0	58	0.24	106BB106019
20	65.5	2825	1	34.4	2.6	37.0	58	0.25	106BB106020
21	68.0	2825	1	34.4	2.6	37.0	58	0.28	106BB106021
22	71.0	2825	1	34.4	2.6	37.0	58	0.31	106BB106022
23	74.0	2825	2	34.4	2.6	37.0	58	0.32	106BB106023
24	77.0	2825	2	34.4	2.6	37.0	60	0.36	106BB106024
25	80.0	2825	2	34.4	2.6	37.0	64	0.42	106BB106025
28	89.0	2825	2	34.4	2.6	37.0	70	0.48	106BB106028
30	95.3	3825	2	34.4	2.6	37.0	75	0.48	106BB106030
32	101.3	3825	2	34.4	2.6	37.0	75	0.52	106BB106032
35	110.4	3825	2	34.4	2.6	37.0	75	0.56	106BB106035
38	119.2	3825	3	32.0	5.0	37.0	75	0.67	106BB106038
40	125.5	3825	3	32.0	5.0	37.0	75	0.74	106BB106040
45	141.0	3825	3	32.0	5.0	37.0	75	0.92	106BB106045
48	150.0	3825	3	32.0	5.0	37.0	75	1.00	106BB106048
50	156.0	3825	3	32.0	5.0	37.0	75	1.20	106BB106050
55	171.0	3825	3	32.0	5.0	37.0	75	1.24	106BB106055
57	176.2	3825	3	32.0	5.0	37.0	75	1.36	106BB106057
60	186.0	3825	3	32.0	5.0	37.0	75	1.40	106BB106060
65	201.5	3825	3A	32.0	5.0	37.0	75	1.56	106BB106065
70	216.5	3825	3A	32.0	5.0	37.0	75	1.69	106BB106070
75	231.5	3825	3A	32.0	5.0	37.0	75	1.80	106BB106075
76	233.6	3825	3A	32.0	5.0	37.0	75	1.86	106BB106076
80	247.0	3825	3A	32.0	5.0	37.0	75	1.95	106BB106080
85	262.2	4830	3A	40.0	5.0	45.0	95	2.20	106BB106085
90	277.4	4830	3A	40.0	5.0	45.0	95	2.40	106BB106090
95	292.5	5040	3A	53.0	5.0	58.0	120	2.60	106BB106095
114	349.5	6045	3A	58.0	5.0	63.0	130	3.20	106BB106114

!! remarque / opmerking / observation / Bemerkung ----> pg 0 !!

: Moyeu / Klembus / Bush / Spannbuchse

3/8" x 7/32"

(ØR 6.35mm)

06B-2

Pignons et roues à moyeu SERAX

pour chaînes de transmission

Kettingwielen met SERAX klembussen

voor rollenkettingen

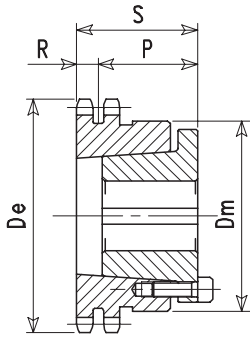
Chain sprockets with SERAX bushings

for roller chains

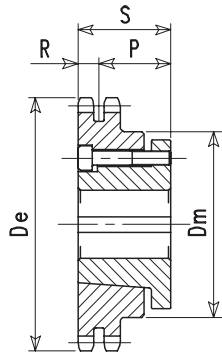
Kettenräder mit SERAX Spannbuchsen

für Rollenketten

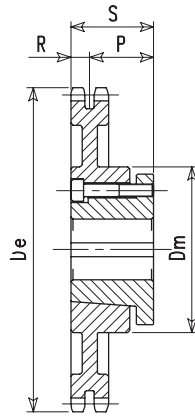
DIN 8187  
ISO/R606



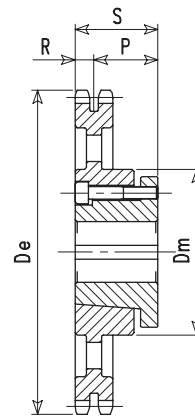
1



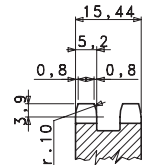
2A




3




3A



DUPLEX

Z	De		Type	P	R	S	Dm	kg	art. n°
15	50.0	2016	1	32.58	7.72	40.3	46	0.13	106BB206015
16	52.3	2016	1	32.58	7.72	40.3	46	0.16	106BB206016
17	55.4	2016	1	32.58	7.72	40.3	46	0.19	106BB206017
18	58.3	2016	1	29.28	7.72	37.0	46	0.22	106BB206018
19	61.2	2825	1	34.28	7.72	42.0	58	0.25	106BB206019
20	65.5	2825	1	34.28	7.72	42.0	58	0.30	106BB206020
21	68.0	2825	1	34.28	7.72	42.0	58	0.34	106BB206021
22	71.0	2825	1	34.28	7.72	42.0	58	0.37	106BB206022
23	74.0	2825	2A	29.28	7.72	37.0	58	0.33	106BB206023
24	77.0	2825	2A	29.28	7.72	37.0	61	0.37	106BB206024
25	80.0	2825	2A	29.28	7.72	37.0	64	0.46	106BB206025
28	89.0	2825	2A	29.28	7.72	37.0	65	0.59	106BB206028
30	95.3	3825	2A	29.28	7.72	37.0	75	0.57	106BB206030
32	101.3	3825	2A	29.28	7.72	37.0	85	0.65	106BB206032
35	110.4	3825	2A	29.28	7.72	37.0	85	0.81	106BB206035
38	119.2	3825	2A	29.28	7.72	37.0	85	1.00	106BB206038
40	125.5	3825	2A	29.28	7.72	37.0	85	0.10	106BB206040
45	141.0	3825	3	29.28	7.72	37.0	85	0.18	106BB206045
48	150.0	3825	3	29.28	7.72	37.0	85	0.35	106BB206048
50	156.0	3825	3	29.28	7.72	37.0	85	0.52	106BB206050
55	171.0	3825	3	29.28	7.72	37.0	85	0.43	106BB206055
57	176.2	3825	3	29.28	7.72	37.0	85	0.58	106BB206057
60	186.0	3825	3	29.28	7.72	37.0	85	0.94	106BB206060
65	201.5	3825	3A	29.28	7.72	37.0	90	2.00	106BB206065
70	216.5	3825	3A	29.28	7.72	37.0	90	2.05	106BB206070
75	231.5	3825	3A	29.28	7.72	37.0	90	2.25	106BB206075
76	233.6	3825	3A	29.28	7.72	37.0	90	2.34	106BB206076
80	247.0	3825	3A	29.28	7.72	37.0	90	2.50	106BB206080
85	262.2	4830	3A	37.28	7.72	45.0	120	2.90	106BB206085
90	277.4	4830	3A	37.28	7.72	45.0	120	3.50	106BB206090
95	292.5	5040	3A	50.28	7.72	58.0	120	5.20	106BB206095
114	349.5	6045	3A	55.28	7.72	63.0	150	11.60	106BB206114

!! remarque / opmerking / observation / Bemerkung ----> pg 0 !!

: Moyeu / Klembus / Bush / Spannbuchse

3/8" x 7/32"

(ØR 6.35mm)

06B-3

Pignons et roues à moyeu SERAX

pour chaînes de transmission

Kettingwielen met SERAX klembussen

voor rollenkettingen

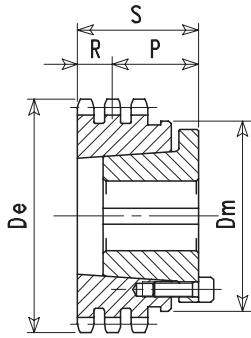
Chain sprockets with SERAX bushings

for roller chains

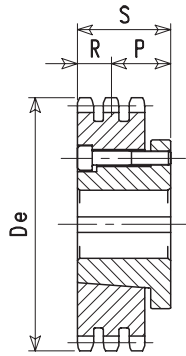
Kettenräder mit SERAX Spannbuchsen

für Rollenketten

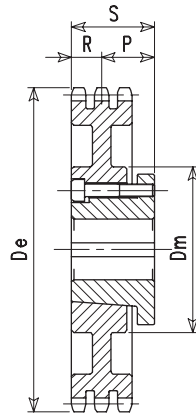
DIN 8187  
ISO/R606



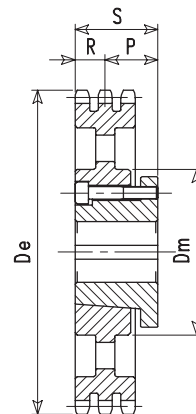
1



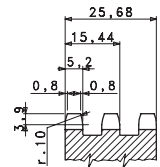
2




3




3A



TRIPLEX

Z	De		Type	P	R	S	Dm	kg	art. n°
19	61.2	2825	1	39.16	12.84	52	58	0.34	106BB306019
20	65.5	2825	1	39.16	12.84	50	58	0.40	106BB306020
21	68.0	2825	1	39.16	12.84	52	58	0.46	106BB306021
22	71.0	2825	1	39.16	12.84	52	58	0.51	106BB306022
23	74.0	2825	2	24.16	12.84	37	-	0.36	106BB306023
24	77.0	2825	2	24.16	12.84	37	-	0.43	106BB306024
25	80.0	2825	2	24.16	12.84	37	-	0.50	106BB306025
28	89.0	2825	2	24.16	12.84	37	-	0.71	106BB306028
30	95.3	3825	2	24.16	12.84	37	-	0.64	106BB306030
32	101.3	3825	2	24.16	12.84	37	-	0.79	106BB306032
35	110.4	3825	2	24.16	12.84	37	-	1.05	106BB306035
38	119.2	3825	2	24.16	12.84	37	-	1.30	106BB306038
40	125.5	3825	3	24.16	12.84	37	-	1.59	106BB306040
45	141.0	3825	3	24.16	12.84	37	75	1.50	106BB306045
48	150.0	3825	3	24.16	12.84	37	75	1.78	106BB306048
50	156.0	3825	3	24.16	12.84	37	75	1.87	106BB306050
55	171.0	3825	3	24.16	12.84	37	75	1.90	106BB306055
57	176.2	3825	3	24.16	12.84	37	75	1.92	106BB306057
60	186.0	3825	3	24.16	12.84	37	75	2.56	106BB306060
65	201.5	3825	3A	24.16	12.84	37	90	2.65	106BB306065
70	216.5	3825	3A	24.16	12.84	37	90	2.75	106BB306070
75	231.5	3825	3A	24.16	12.84	37	90	2.80	106BB306075
76	233.6	3825	3A	24.16	12.84	37	90	2.80	106BB306076
80	247.0	3825	3A	24.16	12.84	37	90	3.00	106BB306080
85	262.2	4830	3A	32.16	12.84	45	120	5.00	106BB306085
90	277.4	4830	3A	32.16	12.84	45	120	6.30	106BB306090
95	292.5	5040	3A	45.16	12.84	58	120	6.10	106BB306095
114	349.5	6045	3A	50.16	12.84	63	150	15.80	106BB306114

!! remarque / opmerking / observation / Bemerkung ----> pg 0 !!

 : Moyeu / Klembus / Bush / Spannbuchse

1/2" x 5/16"

(Ø 8.51mm)

08B-1

Pignons et roues à moyeu SERAX

pour chaînes de transmission

Kettingwielen met SERAX klembussen

voor rollenkettingen

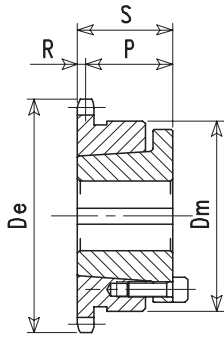
Chain sprockets with SERAX bushings

for roller chains

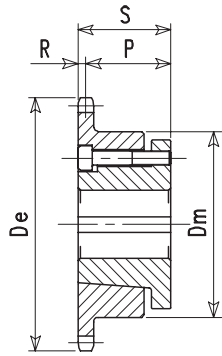
Kettenräder mit SERAX Spannbuchsen

für Rollenketten

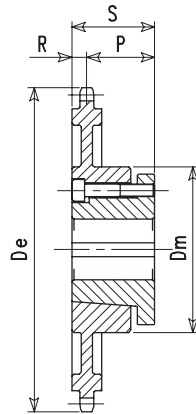
DIN 8187  
ISO/R606



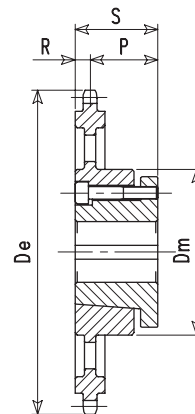
1



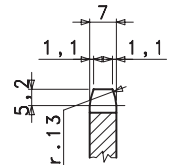
2




3



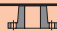
3A



SIMPLEX

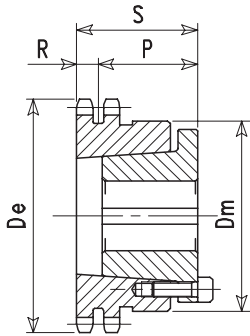
Z	De		Type	P	R	S	Dm	kg	art. n°
12	53.8	2016	1	32.5	3.5	36	46	0.15	106BB108012
13	57.4	2016	1	32.5	3.5	36	46	0.18	106BB108013
14	61.8	2016	1	32.5	3.5	36	46	0.21	106BB108014
15	66.3	2825	1	33.5	3.5	37	58	0.23	106BB108015
16	69.5	2825	1	33.5	3.5	37	58	0.25	106BB108016
17	74.0	2825	2	33.5	3.5	37	58	0.28	106BB108017
18	77.8	2825	2	33.5	3.5	37	58	0.33	106BB108018
19	82.0	2825	2	33.5	3.5	37	62	0.41	106BB108019
20	86.5	3825	2	33.5	3.5	37	67	0.34	106BB108020
21	91.0	3825	2	33.5	3.5	37	71	0.44	106BB108021
22	93.8	3825	2	33.5	3.5	37	75	0.53	106BB108022
23	99.0	3825	2	33.5	3.5	37	75	0.55	106BB108023
24	101.8	3825	2	33.5	3.5	37	75	0.55	106BB108024
25	107.0	3825	2	33.5	3.5	37	75	0.62	106BB108025
28	118.0	3825	2	33.5	3.5	37	75	0.79	106BB108028
30	126.3	4830	2	41.5	3.5	45	95	1.00	106BB108030
32	134.3	4830	2	41.5	3.5	45	95	1.08	106BB108032
35	146.7	4830	2	41.5	3.5	45	95	1.22	106BB108035
38	159.3	4830	3	38.0	3.5	45	105	1.51	106BB108038
40	166.8	4830	3	38.0	7.0	45	105	1.64	106BB108040
45	187.5	4830	3	38.0	7.0	45	110	2.30	106BB108045
48	199.5	4830	3	38.0	7.0	45	110	2.00	106BB108048
50	207.5	4830	3	38.0	7.0	45	110	2.32	106BB108050
55	228.0	4830	3A	38.0	7.0	45	120	2.27	106BB108055
57	235.4	4830	3A	38.0	7.0	45	120	2.47	106BB108057
60	248.0	4830	3A	38.0	7.0	45	120	2.70	106BB108060
65	268.5	4830	3A	38.0	7.0	45	120	2.93	106BB108065
70	288.5	4830	3A	38.0	7.0	45	120	3.35	106BB108070
75	308.5	4830	3A	38.0	7.0	45	120	3.26	106BB108075
76	311.8	4830	3A	38.0	7.0	45	120	3.43	106BB108076
80	329.0	4830	3A	38.0	7.0	45	120	3.92	106BB108080
85	349.0	5040	3A	51.0	7.0	45	120	3.92	106BB108095
90	369.9	5040	3A	51.0	7.0	45	120	4.18	106BB108090
95	390.1	5040	3A	51.0	7.0	45	120	5.70	106BB108095
114	466.9	6045	3A	56.0	7.0	45	150	7.40	106BB1080114

!! remarque / opmerking / observation / Bemerkung ----> pg 0 !!

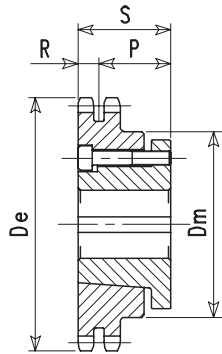
 : Moyeu / Klembus / Bush / Spannbuchs

**1/2" x 5/16" (Ø 8.51mm) 08B-2**

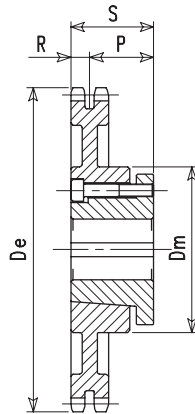
Pignons et roues à moyeu SERAX	pour chaînes de transmission	DIN 8187 ISO/R606
Kettingwielen met SERAX klembussen	voor rollenkettingen	
Chain sprockets with SERAX bushings	for roller chains	
Kettenräder mit SERAX Spannbuchsen	für Rollenketten	



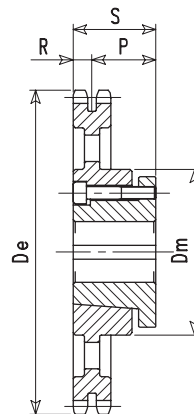
1



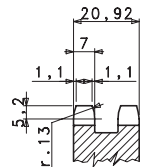
2A




3




3A



**DUPLEX**

Z	De		Type	P	R	S	Dm	kg	art. n°
15	66.3	2825	1	35.54	10.46	46	58	0.30	106BB208015
16	69.5	2825	1	35.54	10.46	46	58	0.36	106BB208016
17	74.0	2825	2A	26.54	10.46	37	58	0.33	106BB208017
18	77.8	2825	2A	26.54	10.46	37	58	0.48	106BB208018
19	82.0	2825	2A	26.54	10.46	37	62	0.47	106BB208019
20	86.5	3825	2A	26.54	10.46	37	67	0.40	106BB208020
21	91.0	3825	2A	26.54	10.46	37	70	0.50	106BB208021
22	93.8	3825	2A	26.54	10.46	37	75	0.58	106BB208022
23	99.0	3825	2A	26.54	10.46	37	75	0.69	106BB208023
24	101.8	3825	2A	26.54	10.46	37	75	0.77	106BB208024
25	107.0	3825	2A	26.54	10.46	37	75	0.88	106BB208025
28	118.0	3825	2A	26.54	10.46	37	75	1.28	106BB208028
30	126.3	4830	2A	34.54	10.46	45	95	1.30	106BB208030
32	134.3	4830	2A	34.54	10.46	45	95	1.50	106BB208032
35	146.7	4830	2A	34.54	10.46	45	95	1.92	106BB208035
38	159.3	4830	2A	34.54	10.46	45	95	2.27	106BB208038
40	166.8	4830	2A	34.54	10.46	45	95	2.55	106BB208040
45	187.5	4830	3	34.54	10.46	45	110	2.28	106BB208045
48	199.5	4830	3	34.54	10.46	45	110	2.35	106BB208048
50	207.5	4830	3	34.54	10.46	45	110	2.68	106BB208050
55	228.0	4830	3A	34.54	10.46	45	120	2.65	106BB208055
57	235.4	4830	3A	34.54	10.46	45	120	3.04	106BB208057
60	248.0	4830	3A	34.54	10.46	45	120	3.40	106BB208060
65	268.5	4830	3A	34.54	10.46	45	120	3.58	106BB208065
70	288.5	4830	3A	34.54	10.46	45	120	4.17	106BB208070
75	308.5	4830	3A	34.54	10.46	45	120	4.24	106BB208075
76	311.8	4830	3A	34.54	10.46	45	120	4.60	106BB208076
80	329.0	4830	3A	34.54	10.46	45	120	4.87	106BB208080
85	349.0	5040	3A	47.54	10.46	58	120	5.75	106BB208095
90	369.9	5040	3A	47.54	10.46	58	120	6.50	106BB208090
95	390.1	6045	3A	52.54	10.46	63	120	7.00	106BB208095
114	466.9	6045	3A	52.54	10.46	63	150	9.00	106BB2080114

!! remarque / opmerking / observation / Bemerkung ----> pg 0 !!

 Moyeu / Klembus / Bush / Spannbuchse

1/2" x 5/16"

(ØR 8.51mm)

08B-3

Pignons et roues à moyeu SERAX

pour chaînes de transmission

Kettingwielen met SERAX klembussen

voor rollenkettingen

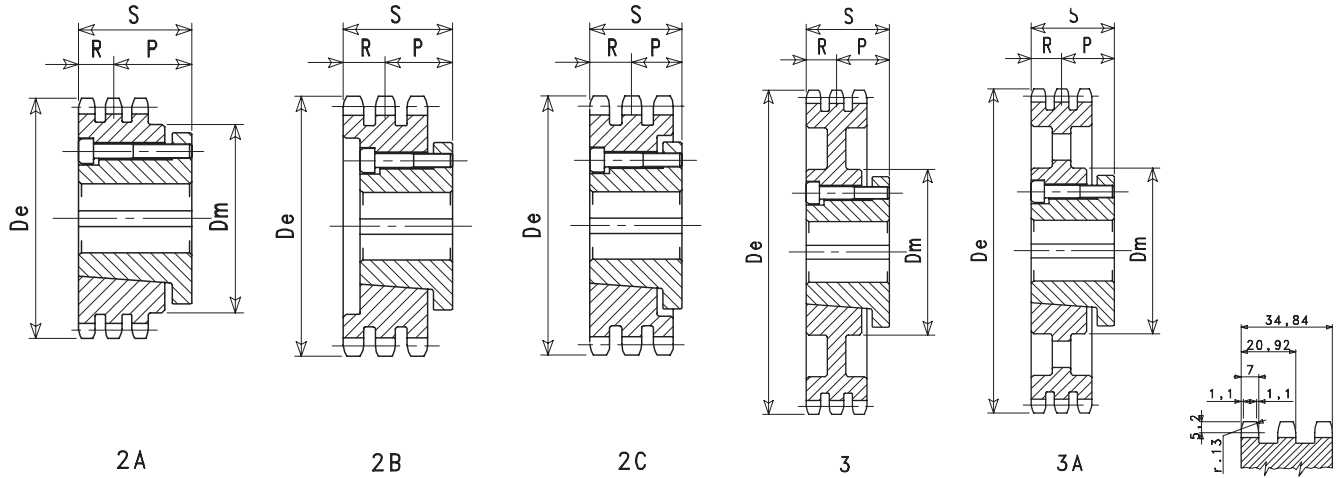
Chain sprockets with SERAX bushings

for roller chains

Kettenräder mit SERAX Spannbuchsen

für Rollenketten

DIN 8187  
ISO/R606



2A


2B

2C


3

3A

TRIPLEX

Z	De		Type	P	R	S	Dm	kg	art. n°
17	74.0	2825	2B	29.58	17.42	47	-	0.42	106BB308017
18	77.8	2825	2B	29.58	17.42	47	-	0.51	106BB308018
19	82.0	2825	2B	29.58	17.42	47	-	0.60	106BB308019
20	86.5	3825	2B	29.58	17.42	47	-	0.54	106BB308020
21	91.0	3825	2B	29.58	17.42	47	-	0.64	106BB308021
22	93.8	3825	2B	29.58	17.42	47	-	0.73	106BB308022
23	99.0	3825	2C	19.58	17.42	37	-	0.90	106BB308023
24	101.8	3825	2C	19.58	17.42	37	-	1.00	106BB308024
25	107.0	4830	2C	27.58	17.42	45	-	1.00	106BB308025
28	118.0	4830	2C	27.58	17.42	45	-	1.20	106BB308028
30	126.3	5040	2A	40.58	17.42	58	107	1.90	106BB308030
32	134.3	5040	2A	40.58	17.42	58	115	2.19	106BB308032
35	146.7	5040	2A	40.58	17.42	58	120	2.82	106BB308035
38	159.3	6035	2A	35.58	17.42	53	-	2.90	106BB308038
40	166.8	6035	2A	35.58	17.42	53	130	3.35	106BB308040
45	187.5	6035	3	35.58	17.42	53	130	4.00	106BB308045
48	199.5	6035	3	35.58	17.42	53	130	3.86	106BB308048
50	207.5	6035	3	35.58	17.42	53	130	4.50	106BB308050
55	228.0	6035	3	35.58	17.42	53	130	4.30	106BB308055
57	235.4	6035	3	35.58	17.42	53	130	5.02	106BB308057
60	248.0	6035	3	35.58	17.42	53	150	6.00	106BB308060
65	268.5	6035	3A	35.58	17.42	53	150	6.00	106BB308065
70	288.5	6035	3A	35.58	17.42	53	150	6.95	106BB308070
75	308.5	6035	3A	35.58	17.42	53	150	5.60	106BB308075
76	311.8	6035	3A	35.58	17.42	53	150	6.20	106BB308076
80	329.0	6035	3A	35.58	17.42	53	150	7.60	106BB308080
85	349.0	6045	3A	45.58	17.42	63	150	8.80	106BB308095
90	369.9	6045	3A	45.58	17.42	63	150	10.10	106BB308090
95	390.1	7060	3A	61.58	17.42	79	165	11.00	106BB308095
114	466.9	7060	3A	61.58	17.42	79	165	13.50	106BB3080114

!! remarque / opmerking / observation / Bemerkung ----> pg 0 !!

: Moyeu / Klembus / Bush / Spannbuchse



5/8" x 3/8"

(ØR 10.16mm)

10B-1

Pignons et roues à moyeu SERAX

pour chaînes de transmission

Kettingwielen met SERAX klembussen

voor rollenkettingen

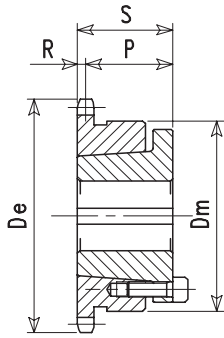
Chain sprockets with SERAX bushings

for roller chains

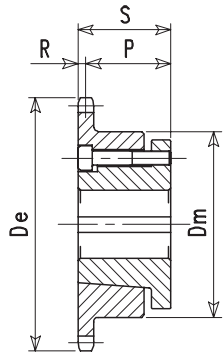
Kettenräder mit SERAX Spannbuchsen

für Rollenketten

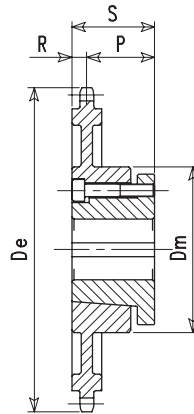
DIN 8187  
ISO/R606



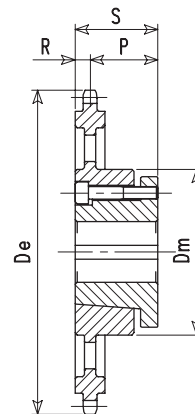
1



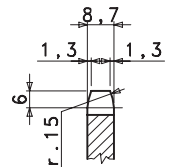
2




3




3A



SIMPLEX

Z	De		Type	P	R	S	Dm	kg	art. n°
12	68.0	2016	1	33.65	4.35	38	46	0.27	106BB110012
13	73.0	2016	2	22.65	4.35	27	48	0.28	106BB110013
14	78.0	2016	2	22.65	4.35	27	52	0.27	106BB110014
15	83.6	2825	2	32.65	4.35	37	58	0.37	106BB110015
16	88.0	2825	2	32.65	4.35	37	62	0.42	106BB110016
17	93.0	3825	2	32.65	4.35	37	69	0.43	106BB110017
18	98.3	3825	2	32.65	4.35	37	72	0.52	106BB110018
19	103.3	3825	2	32.65	4.35	37	75	0.61	106BB110019
20	109.0	3825	2	32.65	4.35	37	75	0.68	106BB110020
21	114.0	3825	2	32.65	4.35	37	75	0.72	106BB110021
22	118.0	3825	2	32.65	4.35	37	75	0.76	106BB110022
23	124.0	4830	2	40.65	4.35	45	95	1.08	106BB110023
24	128.3	4830	2	40.65	4.35	45	95	1.16	106BB110024
25	134.0	4830	2	40.65	4.35	45	95	1.06	106BB110025
28	148.7	4830	2	40.65	4.35	45	95	1.30	106BB110028
30	159.2	4830	2	40.65	4.35	45	120	1.45	106BB110030
32	168.9	4830	2	40.65	4.35	45	120	1.60	106BB110032
35	184.1	4830	2	40.65	4.35	45	120	1.82	106BB110035
38	199.4	4830	3	36.00	9.00	45	120	2.32	106BB110038
40	209.3	4830	3	36.00	9.00	45	120	3.30	106BB110040
45	235.0	4830	3	36.00	9.00	45	120	3.50	106BB110045
48	250.0	4830	3A	36.00	9.00	45	120	2.80	106BB110048
50	260.0	4830	3A	36.00	9.00	45	120	4.00	106BB110050
55	285.5	4830	3A	36.00	9.00	45	120	4.00	106BB110055
57	294.8	4830	3A	36.00	9.00	45	120	4.20	106BB110057
60	310.5	4830	3A	36.00	9.00	45	120	4.75	106BB110060
65	336.0	4830	3A	36.00	9.00	45	120	5.20	106BB110065
70	361.0	4830	3A	36.00	9.00	45	120	6.00	106BB110070
75	386.5	4830	3A	36.00	9.00	45	120	5.80	106BB110075
76	390.5	4830	3A	36.00	9.00	45	120	6.40	106BB110076
80	411.5	4830	3A	36.00	9.00	45	120	6.45	106BB110080
85	437.5	5040	3A	49.00	9.00	58	120	6.90	106BB110085
90	462.8	5040	3A	49.00	9.00	58	120	7.60	106BB110090
95	488.5	6045	3A	54.00	9.00	63	150	8.90	106BB110095
114	584.1	6045	3A	54.00	9.00	63	150	11.00	106BB110114

!! remarque / opmerking / observation / Bemerkung ----> pg 0 !!

: Moyeu / Klembus / Bush / Spannbuchse

5/8" x 3/8"

(ØR 10.16mm)

10B-2

Pignons et roues à moyeu SERAX

pour chaînes de transmission

Kettingwielen met SERAX klembussen

voor rollenkettingen

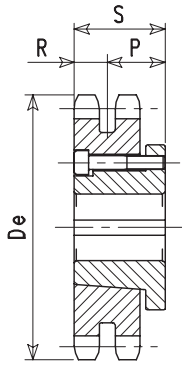
Chain sprockets with SERAX bushings

for roller chains

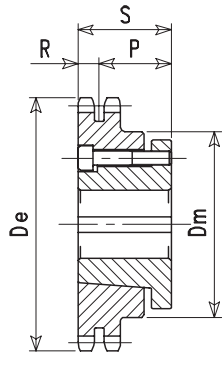
Kettenräder mit SERAX Spannbuchsen

für Rollenketten

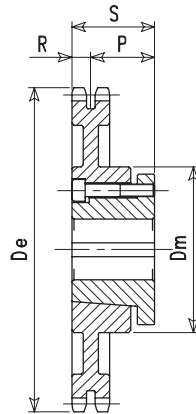
DIN 8187  
ISO/R606



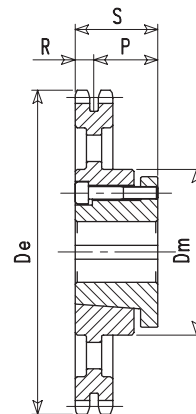
2



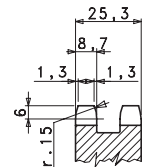
2A




3




3A



DUPLEX

Z	De		Type	P	R	S	Dm	kg	art. n°
15	83.6	2825	2	24.35	12.65	37	-	0.47	106BB210015
16	88.0	2825	2	24.35	12.65	37	-	0.57	106BB210016
17	93.0	3825	2	24.35	12.65	37	-	0.50	106BB210017
18	98.3	3825	2	24.35	12.65	37	-	0.66	106BB210018
19	103.3	3825	2	24.35	12.65	37	-	0.79	106BB210019
20	109.0	3825	2A	32.35	12.65	45	84	0.78	106BB210020
21	114.0	4830	2A	32.35	12.65	45	88	1.00	106BB210021
22	118.0	4830	2A	32.35	12.65	45	90	1.10	106BB210022
23	124.0	4830	2A	32.35	12.65	45	95	1.30	106BB210023
24	128.3	4830	2A	32.35	12.65	45	95	1.49	106BB210024
25	134.0	4830	2A	32.35	12.65	45	95	1.70	106BB210025
28	148.7	4830	2A	32.35	12.65	45	95	2.25	106BB210028
30	159.2	6035	2A	40.35	12.65	53	130	2.50	106BB210030
32	168.9	6035	2A	40.35	12.65	53	130	3.20	106BB210032
35	184.1	6035	2A	40.35	12.65	53	130	3.60	106BB210035
38	199.4	6035	3	40.35	12.65	53	130	4.00	106BB210038
40	209.3	6035	3	40.35	12.65	53	130	4.20	106BB210040
45	235.0	6035	3	40.35	12.65	53	130	5.00	106BB210045
48	250.0	6035	3	40.35	12.65	53	130	4.73	106BB210048
50	260.0	6035	3	40.35	12.65	53	130	5.40	106BB210050
55	285.5	6035	3A	40.35	12.65	53	150	6.80	106BBB210055
57	294.8	6035	3A	40.35	12.65	53	150	7.00	106BB210057
60	310.5	6035	3A	40.35	12.65	53	150	7.30	106BB210060
65	336.0	6035	3A	40.35	12.65	53	150	7.30	106BB210065
70	361.0	6035	3A	40.35	12.65	53	150	7.30	106BB210070
75	386.5	6035	3A	40.35	12.65	53	150	8.80	106BB210075
76	390.5	6035	3A	40.35	12.65	53	150	9.60	106BB210076
80	411.5	6035	3A	40.35	12.65	53	150	8.35	106BB210080
85	437.5	6035	3A	40.35	12.65	53	150	8.85	106BB210085
90	462.8	6035	3A	40.35	12.65	53	150	9.40	106BB210090
95	488.5	6045	3A	50.35	12.65	63	150	11.40	106BB210095
114	584.1	6045	3A	50.35	12.65	63	150	14.70	106BB210114

!! remarque / opmerking / observation / Bemerkung ----> pg 0 !!

 : Moyeu / Klembus / Bush / Spannbuchse

5/8" x 3/8"

(ØR 10.16mm)

10B-3

Pignons et roues à moyeu SERAX

pour chaînes de transmission

Kettingwielen met SERAX klembussen

voor rollenkettingen

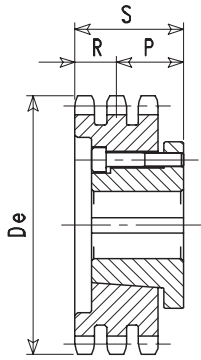
Chain sprockets with SERAX bushings

for roller chains

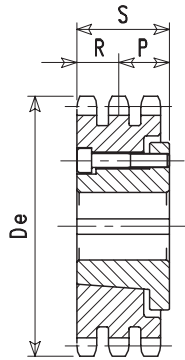
Kettenräder mit SERAX Spannbuchsen

für Rollenketten

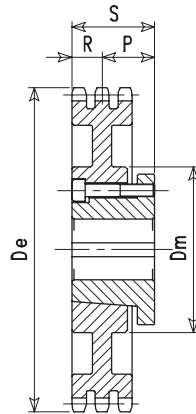
DIN 8187  
ISO/R606



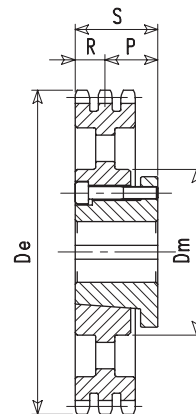
2B



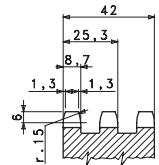
2C




3




3A



TRIPLEX

Z	De		Type	P	R	S	Dm	kg	art. n°
15	83.6	2825	2B	33	21	54	-	0.73	106BB310015
16	88.0	2825	2B	33	21	54	-	0.78	106BB310016
17	93.0	3825	2B	33	21	54	-	0.76	106BB310017
18	98.3	3825	2B	33	21	54	-	0.80	106BB310018
19	103.3	3825	2B	33	21	54	-	0.94	106BB310019
20	109.0	4830	2B	36	21	57	-	1.04	106BB310020
21	114.0	4830	2B	36	21	57	-	1.23	106BB310021
22	118.0	4830	2B	36	21	57	-	1.32	106BB310022
23	124.0	4830	2C	24	21	45	-	1.64	106BB310023
24	128.3	4830	2C	24	21	45	-	1.90	106BB310024
25	134.0	4830	2C	24	21	45	-	2.19	106BB310025
28	148.7	4830	2C	24	21	45	-	2.90	106BB310028
30	159.2	6035	2C	32	21	53	-	3.75	106BB310030
32	168.9	6035	2C	32	21	53	-	3.70	106BB310032
35	184.1	6035	2C	32	21	53	-	4.85	106BB310035
38	199.4	6035	2C	32	21	53	-	6.20	106BB310038
40	209.3	6035	2C	32	21	53	-	6.95	106BB310040
45	235.0	7540	3	38	21	59	-	6.80	106BB310045
48	250.0	7540	3	38	21	59	150	7.20	106BB310048
50	260.0	7540	3	38	21	59	150	7.60	106BB310050
55	285.5	7540	3	38	21	59	150	10.50	106BB310055
57	294.8	7540	3	38	21	59	170	9.40	106BB310057
60	310.5	7540	3	38	21	59	170	10.60	106BB310060
65	336.0	7540	3A	38	21	59	170	9.20	106BB310065
70	361.0	7540	3A	38	21	59	170	11.00	106BB310070
75	386.5	7540	3A	38	21	59	170	12.80	106BB310075
76	390.5	7540	3A	38	21	59	170	13.50	106BB310076
80	411.5	7540	3A	38	21	59	170	13.90	106BB310080
85	437.5	7540	3A	38	21	59	170	14.40	106BB310085
90	462.8	7540	3A	38	21	59	170	15.00	106BB310090
95	488.5	7540	3A	38	21	59	170	15.40	106BB310095
114	584.1	7060	3A	58	21	79	170	17.00	106BB3100114

!! remarque / opmerking / observation / Bemerkung ----> pg 0 !!

 Moyeu / Klembus / Bush / Spannbuchse

3/4" x 7/16"

(ØR 12.07mm)

12B-1

Pignons et roues à moyeu SERAX

pour chaînes de transmission

Kettingwielen met SERAX klembussen

voor rollenkettingen

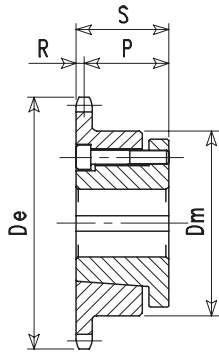
Chain sprockets with SERAX bushings

for roller chains

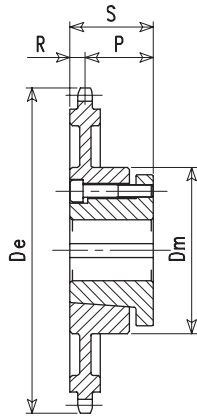
Kettenräder mit SERAX Spannbuchsen

für Rollenketten

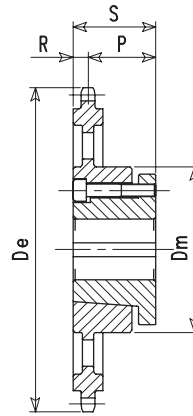
DIN 8187  
ISO/R606



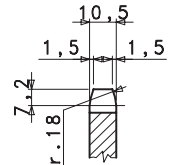
2




3




3A



SIMPLEX

Z	De		Type	P	R	S	Dm	kg	art. n°
12	81.5	2825	2	31.75	5.25	37	56	0.34	106BB112012
13	87.5	2825	2	31.75	5.25	37	59	0.50	106BB112013
14	93.6	2825	2	31.75	5.25	37	65	0.56	106BB112014
15	100.4	3825	2	31.75	5.25	37	72	0.54	106BB112015
16	105.5	3825	2	31.75	5.25	37	75	0.65	106BB112016
17	112.0	3825	2	31.75	5.25	37	75	0.72	106BB112017
18	118.0	3825	2	31.75	5.25	37	75	0.80	106BB112018
19	124.2	4830	2	39.75	5.25	45	95	1.10	106BB112019
20	130.2	4830	2	39.75	5.25	45	95	0.19	106BB112020
21	135.5	4830	2	39.75	5.25	45	95	0.29	106BB112021
22	141.8	4830	2	39.75	5.25	45	95	0.45	106BB112022
23	150.0	6035	2	47.75	5.25	53	120	0.95	106BB112023
24	153.9	6035	2	47.75	5.25	53	125	2.24	106BB112024
25	161.0	6035	2	47.75	5.25	53	130	2.52	106BB112025
28	178.0	6035	2	47.75	5.25	53	130	2.88	106BB112028
30	191.6	6035	2	43.00	5.25	53	150	3.61	106BB112030
32	203.3	6035	2	43.00	5.25	53	150	3.20	106BB112032
35	221.0	6035	2	43.00	5.25	53	150	4.42	106BB112035
38	239.8	6035	3	43.00	10.00	53	150	5.50	106BB112038
40	251.3	6035	3	43.00	10.00	53	150	6.40	106BB112040
45	282.0	6035	3	43.00	10.00	53	150	5.60	106BB112045
48	300.0	6035	3A	43.00	10.00	53	150	5.70	106BB112048
50	312.0	6035	3A	43.00	10.00	53	150	6.60	106BB112050
55	342.5	6035	3A	43.00	10.00	53	150	6.60	106BB112055
57	354.5	6035	3A	43.00	10.00	53	150	7.70	106BB112057
60	372.5	6035	3A	43.00	10.00	53	150	7.50	106BB112060
65	403.0	6035	3A	43.00	10.00	53	150	8.50	106BB112065
70	433.5	6035	3A	43.00	10.00	53	150	9.00	106BB112070
75	463.5	6035	3A	43.00	10.00	53	150	8.80	106BB112075
76	469.5	6035	3A	43.00	10.00	53	150	9.60	106BB112076
80	494.0	6035	3A	43.00	10.00	53	150	10.95	106BB112080
85	524.5	6035	3A	43.00	10.00	53	150	12.30	106BB112085
90	554.8	6035	3A	43.00	10.00	53	150	14.60	106BB112090
95	585.1	7060	3A	69.00	10.00	79	150	19.00	106BB112095
114	700.6	7060	3A	69.00	10.00	79	150	23.00	106BB1120114

!! remarque / opmerking / observation / Bemerkung ----> pg 0 !!

 : Moyeu / Klembus / Bush / Spannbuchse

3/4" x 7/16"

(ØR 12.07mm)

12B-2

Pignons et roues à moyeu SERAX

pour chaînes de transmission

Kettingwielen met SERAX klembussen

voor rollenkettingen

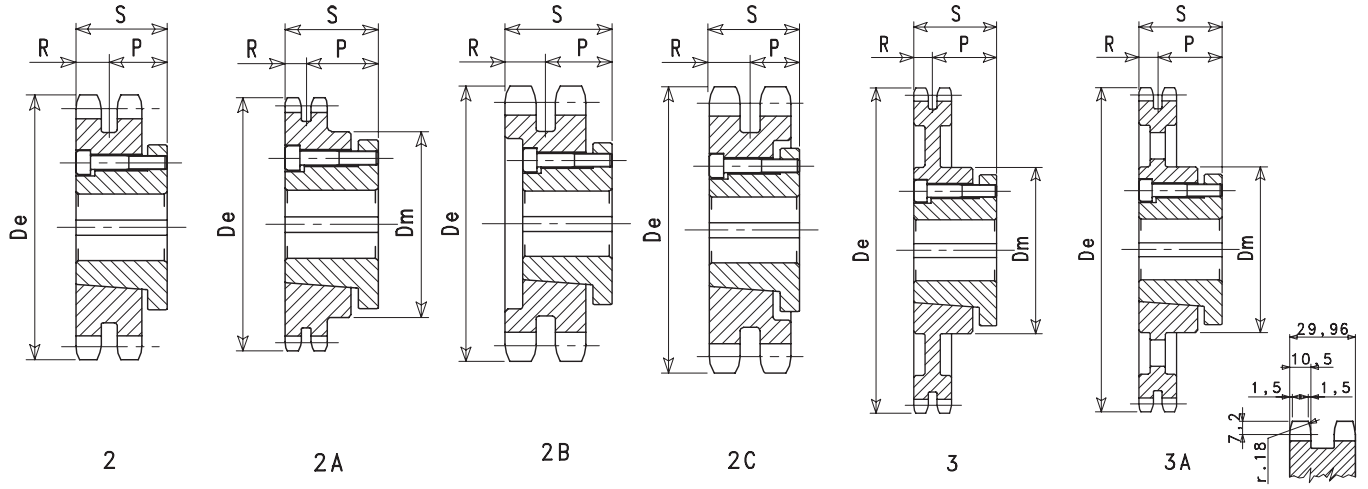
Chain sprockets with SERAX bushings

for roller chains


Kettenräder mit SERAX Spannbuchsen

für Rollenketten


DIN 8187  
ISO/R606



DUPLEX

Z	De		Type	P	R	S	Dm	kg	art. n°
12	81.5	2825	2B	26.98	14.98	41.96	-	0.44	106BB212012
13	87.5	2825	2B	26.98	14.98	41.96	-	0.58	106BB212013
14	93.6	2825	2B	26.98	14.98	41.96	-	0.72	106BB212014
15	100.4	3825	2B	26.98	14.98	41.96	-	0.72	106BB212015
16	105.5	3825	2B	26.98	14.98	41.96	-	0.87	106BB212016
17	112.0	3825	2C	22.02	14.98	37.00	-	1.06	106BB212017
18	118.0	3825	2C	22.02	14.98	37.00	-	1.26	106BB212018
19	124.2	4830	2	30.02	14.98	45.00	-	1.30	106BB212019
20	130.2	4830	2	30.02	14.98	45.00	-	1.56	106BB212020
21	135.5	4830	2	30.02	14.98	45.00	-	1.84	106BB212021
22	141.8	4830	2	30.02	14.98	45.00	-	2.00	106BB212022
23	150.0	6035	2A	38.02	14.98	53.00	120	2.23	106BB212023
24	153.9	6035	2A	38.02	14.98	53.00	125	2.52	106BB212024
25	161.0	6035	2A	38.02	14.98	53.00	130	2.90	106BB212025
28	178.0	6035	2A	38.02	14.98	53.00	130	3.88	106BB212028
30	191.6	6035	2A	38.02	14.98	53.00	150	4.26	106BB212030
32	203.3	6035	2A	38.02	14.98	53.00	130	5.00	106BB212032
35	221.0	6035	2A	38.02	14.98	53.00	130	6.40	106BB212035
38	239.8	6035	2A	38.02	14.98	53.00	130	7.30	106BB212038
40	251.3	6035	3	38.02	14.98	53.00	150	6.60	106BB212040
45	282.0	6035	3	38.02	14.98	53.00	150	8.60	106BB212045
48	300.0	6035	3A	38.02	14.98	53.00	150	7.20	106BB212048
50	312.0	6035	3A	38.02	14.98	53.00	150	7.80	106BB212050
55	342.5	6035	3A	38.02	14.98	53.00	150	8.40	106BB212055
57	354.5	6035	3A	38.02	14.98	53.00	150	10.00	106BB212057
60	372.5	6035	3A	38.02	14.98	53.00	150	9.50	106BB212060
65	403.0	6035	3A	38.02	14.98	53.00	150	11.20	106BB212065
70	433.5	6035	3A	38.02	14.98	53.00	150	11.80	106BB212070
75	463.5	6035	3A	44.02	14.98	59.00	165	11.80	106BB212075
76	469.5	7540	3A	44.02	14.98	59.00	165	13.20	106BB212076
80	494.0	7540	3A	44.02	14.98	59.00	165	15.20	106BB212080
85	524.5	7540	3A	44.02	14.98	59.00	165	17.60	106BB212085
90	554.8	7540	3A	44.02	14.98	59.00	165	19.30	106BB212090
95	585.1	7060	3A	64.02	14.98	79.00	165	24.50	106BB212095
114	700.6	7060	3A	64.02	14.98	79.00	165	27.35	106BB2120114

!! remarque / opmerking / observation / Bemerkung ----> pg 0 !!

 : Moyeu / Klembus / Bush / Spannbuchse

3/4" x 7/16"

(ØR 12.07mm)

12B-3

Pignons et roues à moyeu SERAX

pour chaînes de transmission

Kettingwielen met SERAX klembussen

voor rollenkettingen

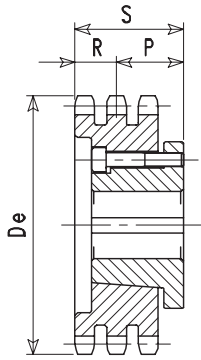
Chain sprockets with SERAX bushings

for roller chains

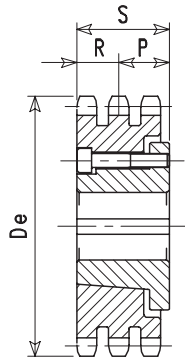
Kettenräder mit SERAX Spannbuchsen

für Rollenketten

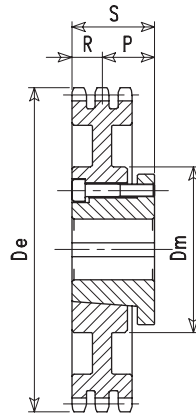
DIN 8187  
ISO/R606



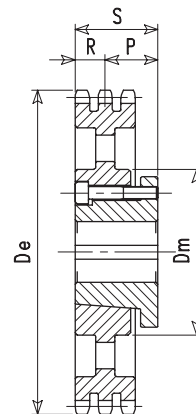
2B



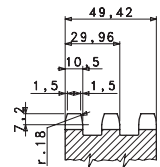
2C




3




3A



TRIPLEX

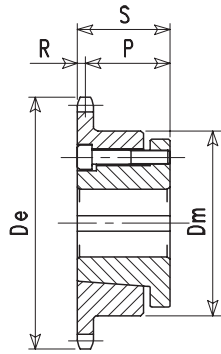
Z	De		Type	P	R	S	Dm	kg	art. n°
17	112.0	4830	2B	39.91	24.71	64.62	-	1.29	106BB312017
18	118.0	4830	2B	39.91	24.71	64.62	-	1.64	106BB312018
19	124.2	4830	2B	39.91	24.71	64.62	-	1.62	106BB312019
20	130.2	5040	2B	42.71	24.71	67.42	-	2.05	106BB312020
21	135.5	5040	2B	42.71	24.71	67.42	-	2.60	106BB312021
22	141.8	5040	2B	42.71	24.71	67.42	-	2.92	106BB312022
23	150.0	6045	2B	42.71	24.71	67.42	-	3.03	106BB312023
24	153.9	6045	2B	42.71	24.71	67.42	-	3.40	106BB312024
25	161.0	6045	2B	42.71	24.71	67.42	-	3.84	106BB312025
28	178.0	6045	2B	42.71	24.71	67.42	-	5.50	106BB312028
30	191.6	7540	2C	34.29	24.71	59.00	-	5.02	106BB312030
32	203.3	7540	2C	34.29	24.71	59.00	-	6.20	106BB312032
35	221.0	7540	2C	34.29	24.71	59.00	-	8.20	106BB312035
38	239.8	7540	2C	34.29	24.71	59.00	-	40.40	106BB312038
40	251.3	7540	2C	34.29	24.71	59.00	-	11.90	106BB312040
45	282.0	7540	3	34.29	24.71	59.00	150	10.20	106BB312045
48	300.0	7540	3A	34.29	24.71	59.00	150	11.00	106BB312048
50	312.0	7540	3A	34.29	24.71	59.00	165	11.40	106BB312050
55	342.5	7540	3A	34.29	24.71	59.00	165	13.20	106BB312055
57	354.5	7540	3A	34.29	24.71	59.00	165	13.00	106BB312057
60	372.5	7540	3A	34.29	24.71	59.00	165	12.80	106BB312060
65	403.0	7540	3A	34.29	24.71	59.00	165	14.90	106BB312065
70	433.5	7540	3A	34.29	24.71	59.00	165	16.20	106BB312070
75	463.5	7540	3A	34.29	24.71	59.00	165	18.40	106BB312075
76	469.5	7540	3A	34.29	24.71	59.00	165	16.40	106BB312076
80	494.0	7540	3A	34.29	24.71	59.00	180	20.00	106BB312080
85	524.5	8070	3A	63.29	24.71	88.00	180	28.00	106BB312085
90	554.8	8070	3A	63.29	24.71	88.00	180	35.00	106BB312090
95	585.1	9085	3A	80.29	24.71	105.00	200	40.20	106BB312095
114	700.6	9085	3A	80.29	24.71	105.00	200	50.00	106BB3120114

!! remarque / opmerking / observation / Bemerkung ----> pg 0 !!

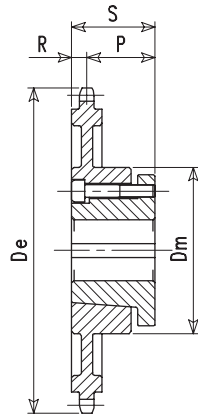
 : Moyeu / Klembus / Bush / Spannbuchse

**1" x 17.02" (ØR 15.88mm) 16B-1**

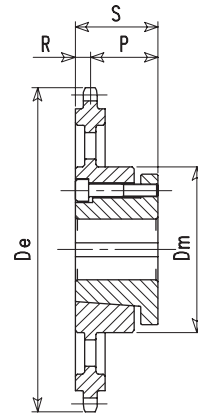
Pignons et roues à moyeu SERAX	pour chaînes de transmission	<b>DIN 8187 ISO/R606</b>
Kettingwielen met SERAX klembussen	voor rollenkettingen	
Chain sprockets with SERAX bushings	for roller chains	
Kettenräder mit SERAX Spannbuchsen	für Rollenketten	



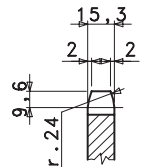
2




3




3A



**SIMPLEX**

Z	De		Type	P	R	S	Dm	kg	art. n°
12	109.5	3825	2	29.35	7.65	37	70	0.68	106BB116012
13	117.0	3825	2	29.35	7.65	37	75	1.00	106BB116013
14	125.0	3825	2	29.35	7.65	37	75	1.31	106BB116014
15	133.7	4830	2	37.35	7.65	45	95	1.32	106BB116015
16	141.0	4830	2	37.35	7.65	45	95	1.48	106BB116016
17	149.0	4830	2	37.35	7.65	45	95	1.80	106BB116017
18	157.0	4830	2	37.35	7.65	45	95	2.00	106BB116018
19	164.5	6035	2	45.35	7.65	53	125	2.50	106BB116019
20	174.0	6035	2	45.35	7.65	53	130	2.95	106BB116020
21	181.3	6035	2	45.35	7.65	53	130	3.16	106BB116021
22	189.3	6035	2	45.35	7.65	53	130	3.40	106BB116022
23	198.0	6035	2	45.35	7.65	53	130	3.70	106BB116023
25	214.0	6035	2	45.35	7.65	53	130	4.25	106BB116025
28	237.7	6035	2	45.35	7.65	53	130	5.25	106BB116028
30	255.0	6035	3	39.00	14.00	53	150	6.60	106BB116030
38	320.0	7540	3	45.00	14.00	59	165	9.80	106BB116038
40	336.9	7540	3	45.00	14.00	59	150	10.80	106BB116040
45	375.5	7540	3A	45.00	14.00	59	165	11.40	106BB116045
50	416.0	7540	3A	45.00	14.00	59	165	11.40	106BB116050
57	472.8	7540	3A	45.00	14.00	59	170	15.00	106BB116057
60	496.5	7540	3A	45.00	14.00	59	150	14.80	106BB116060
65	537.0	7540	3A	45.00	14.00	59	170	18.40	106BB116065
70	577.5	7540	3A	45.00	14.00	59	170	21.00	106BB116070
76	626.0	7540	3A	45.00	14.00	59	170	22.40	106BB116076
80	660.0	7540	3A	45.00	14.00	59	170	25.20	106BB116080
85	700.0	7540	3A	45.00	14.00	59	170	28.70	106BB116085
90	739.0	8070	3A	74.00	14.00	88	180	32.50	106BB116090
95	781.0	8070	3A	74.00	14.00	88	180	34.00	106BB116095
114	933.0	8070	3A	74.00	14.00	88	180	45.20	106BB1160114

!! remarque / opmerking / observation / Bemerkung ----> pg 0 !!

 : Moyeu / Klembus / Bush / Spannbuchse

1" x 17.02"

(ØR 15.88mm)

16B-2

Pignons et roues à moyeu SERAX

pour chaînes de transmission

Kettingwielen met SERAX klembussen

voor rollenkettingen

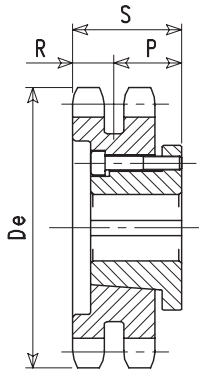
Chain sprockets with SERAX bushings

for roller chains

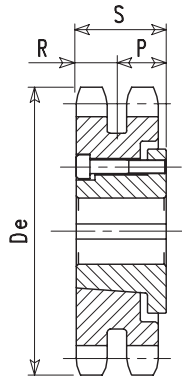
Kettenräder mit SERAX Spannbuchsen

für Rollenketten

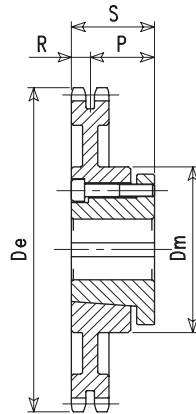
DIN 8187  
ISO/R606



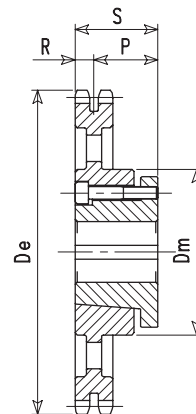
2B



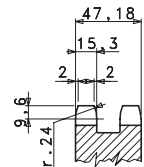
2C




3




3A



DUPLEX

Z	De		Type	P	R	S	Dm	kg	art. n°
15	133.7	4830	2B	38.59	23.59	62.18	-	1.83	106BB216015
16	141.0	4830	2B	38.59	23.59	62.18	-	2.20	106BB216016
17	149.0	6035	2B	41.59	23.59	65.18	-	2.40	106BB216017
18	157.0	6035	2B	41.59	23.59	65.18	-	2.83	106BB216018
19	164.5	6035	2B	41.59	23.59	65.18	-	3.24	106BB216019
20	174.0	7540	2B	42.59	23.59	66.18	-	3.30	106BB216020
21	181.3	7540	2C	35.41	23.59	59.00	-	4.20	106BB216021
22	189.3	7540	2C	35.41	23.59	59.00	-	4.62	106BB216022
23	198.0	7540	2C	35.41	23.59	59.00	-	5.60	106BB216023
25	214.0	7540	2C	35.41	23.59	59.00	-	7.40	106BB216025
28	237.7	7540	2C	35.41	23.59	59.00	-	10.00	106BB216028
30	255.0	7540	2C	35.41	23.59	59.00	-	11.20	106BB216030
38	320.0	7540	3	35.41	23.59	59.00	165	14.00	106BB216038
40	336.9	7540	3	35.41	23.59	59.00	165	15.00	106BB216040
45	375.5	7540	3A	35.41	23.59	59.00	165	11.00	106BB216045
50	416.0	7540	3A	35.41	23.59	59.00	165	15.00	106BB216050
57	472.8	7540	3A	35.41	23.59	59.00	170	20.60	106BB216057
60	496.5	7540	3A	35.41	23.59	59.00	170	19.40	106BB216060
65	537.0	7540	3A	35.41	23.59	59.00	170	25.40	106BB216065
70	577.5	7540	3A	35.41	23.59	59.00	170	29.60	106BB216070
76	626.0	7540	3A	56.41	23.59	59.00	190	32.60	106BB216076
80	660.0	9560	3A	56.41	23.59	80.00	190	33.60	106BB216080
85	700.0	9560	3A	56.41	23.59	80.00	190	36.90	106BB216085
90	739.0	9560	3A	56.41	23.59	80.00	190	40.20	106BB216090
95	781.0	9560	3A	56.41	23.59	80.00	200	49.00	106BB216095
114	933.0	9585	3A	81.41	23.59	105.00	200	62.00	106BB2160114

!! remarque / opmerking / observation / Bemerkung ----> pg 0 !!

 : Moyeu / Klembus / Bush / Spannbuchsen



1" x 17.02"

(ØR 15.88mm)

16B-3

Pignons et roues à moyeu SERAX

pour chaînes de transmission

Kettingwielen met SERAX klembussen

voor rollenkettingen

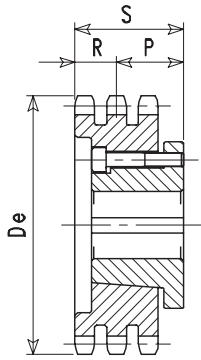
Chain sprockets with SERAX bushings

for roller chains

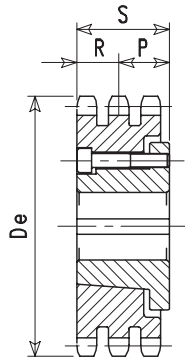
Kettenräder mit SERAX Spannbuchsen

für Rollenketten

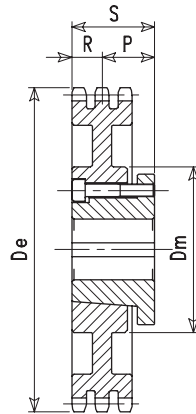
DIN 8187  
ISO/R606



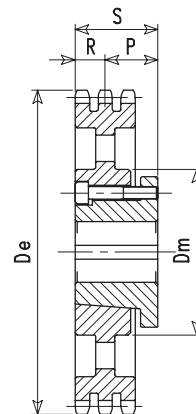
2B



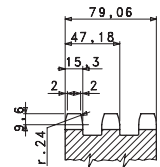
2C




3




3A



TRIPLEX

Z	De		Type	P	R	S	Dm	kg	art. n°
17	149.0	6045	2B	57.53	39.53	97.06	-	3.70	106BB316017
18	157.0	6045	2B	57.53	39.53	97.06	-	4.53	106BB316018
19	164.5	6045	2B	57.53	39.53	97.06	-	5.40	106BB316019
20	174.0	7060	2B	58.53	39.53	98.06	-	5.60	106BB316020
21	181.3	7060	2B	58.53	39.53	98.06	-	6.40	106BB316021
22	189.3	7060	2B	58.53	39.53	98.06	-	7.40	106BB316022
23	198.0	7060	2B	58.53	39.53	98.06	-	8.40	106BB316023
25	214.0	9560	2B	59.53	39.53	99.06	-	8.60	106BB316025
28	237.7	9560	2B	59.53	39.53	99.06	-	13.20	106BB316028
30	255.0	9560	2C	40.47	39.53	80.00	-	15.00	106BB316030
38	320.0	9560	3	40.47	39.53	80.00	200	19.40	106BB316038
40	336.9	9560	3	40.47	39.53	80.00	200	23.00	106BB316040
45	375.5	9560	3	40.47	39.53	80.00	200	26.00	106BB316045
50	416.0	9560	3A	40.47	39.53	80.00	200	23.80	106BB316050
57	472.8	9560	3A	40.47	39.53	80.00	200	33.40	106BB316057
60	496.5	9560	3A	40.47	39.53	80.00	200	30.00	106BB316060
65	537.0	9560	3A	40.47	39.53	80.00	200	37.80	106BB316065
70	577.5	9560	3A	40.47	39.53	80.00	200	45.00	106BB316070
76	626.0	9560	3A	40.47	39.53	80.00	200	40.40	106BB316076
80	660.0	9560	3A	40.47	39.53	80.00	200	48.00	106BB316080
85	700.0	9560	3A	40.47	39.53	80.00	200	56.00	106BB316085
90	739.0	9560	3A	40.47	39.53	80.00	200	63.00	106BB316090
95	781.0	9085	3A	65.47	39.53	105.00	200	74.00	106BB316095
114	933.0	10095	3A	79.47	39.53	119.00	215	90.00	106BB3160114

!! remarque / opmerking / observation / Bemerkung ----> pg 0 !!

 : Moyeu / Klembus / Bush / Spannbuchse

1"1/4 x 3/4"

(ØR 19.05mm)

20B-1-2-3

Pignons et roues à moyeu SERAX	pour chaînes de transmission
Kettingwielen met SERAX klembussen	voor rollenkettingen
Chain sprockets with SERAX bushings	for roller chains
Kettenräder mit SERAX Klemmbuschen	für Rollenketten

DIN 8187

ISO/R606

**○ — Pignon plein**

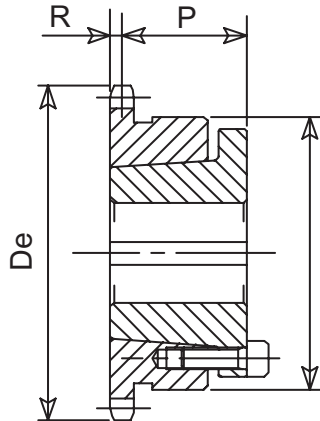
GB Solid sprocket  
D Vollritzel  
NL Vol kettingwiel  
I Pignone piano

**I — Roue à toile**

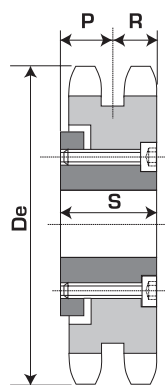
GB Web wheel  
D Bodenräder  
NL Bodem kettingwiel  
I Ruota a stella

**+ — Roue à bras**

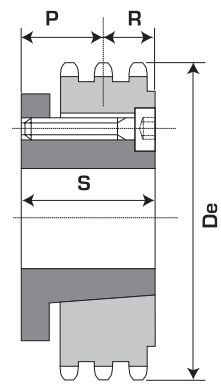
GB Arm wheel  
D Armräder  
NL Spaak kettingwiel  
I Ruota a braccio



**Type Z**



**Type T**



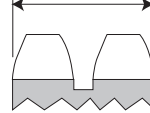
1

Type	20B
a1	18.4
a2	54.5
a3	91.0

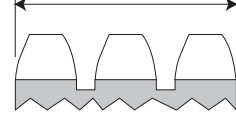
a1



a2



a3



Z	De	SIMPLEX						DUPLEX						TRIPLEX						
			Type	P	R	kg	art. n°		Type	P	R	kg	art. n°		Type	P	R	kg	art. n°	
15	168	6035	JO	44	9		106BB120015	6045	ZO	36	27		106BB220015							
17	188	6035	JO	44	9		106BB120017	6045	ZO	36	27		106BB220017	7060	JO	64	45			106BB320017
19	208	7540	JO	50	9		106BB120019	7540	ZO	32	27		106BB220019	7060	JO	64	45			106BB320019
20	221	7540	JO	50	9		106BB120020	7540	ZO	32	27		106BB220020	9085	ZO	60	45			106BB320020
21	231	7540	JO	50	9		106BB120021	9560	TO	47	33		106BB220021	9085	ZO	60	45			106BB320021
23	251	7540	JO	50	9		106BB120023	9560	TO	47	33		106BB220023	10095	ZO	74	45			106BB320023
25	271	7540	JO	50	9		106BB120025	9560	TO	47	33		106BB220025	10095	ZO	74	59			106BB320025
30	321	7540	JO	44	15		106BB120030	9560	TO	47	33		106BB220030	115105	TO	71	59			106BB320030
38	401	7540	JO	44	15		106BB120038	9560	TI	47	33		106BB220038	115105	T+	71	59			106BB320038
57	592	9560	JI	35	45		106BB120057	9560	T+	47	33		106BB220057	115105	T+	71	59			106BB320057
76	783	9560	JI	35	45		106BB120076	9560	T+	47	33		106BB220076	115105	T+	71	59			106BB320076

!! remarque / opmerking / observation / Bemerkung ----> pg 0 !!

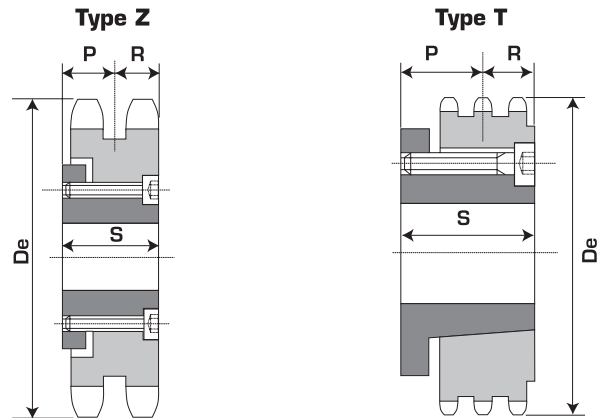
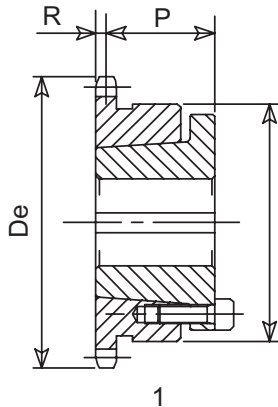
: Moyeu / Klembus / Bush / Spannbuschs

**1"1/2 x 1" (ØR 25.4mm) 24B-1-2-3**

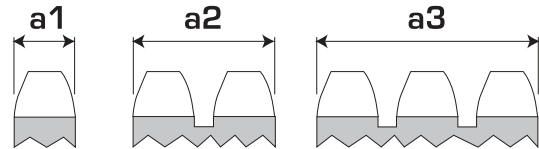
Pignons et roues à moyeu SERAX	pour chaînes de transmission
Kettingwielen met SERAX klembussen	voor rollenkettingen
Chain sprockets with SERAX bushings	for roller chains
Kettenräder mit SERAX Klemmbuschen	für Rollenketten

DIN 8187 ISO/R606

- O** — **Pignon plein**  
GB Solid sprocket  
D Vollritzel  
NL Vol kettingwiel  
I Pignone piano
- I** — **Roue à toile**  
GB Web wheel  
D Bodenräder  
NL Bodem kettingwiel  
I Ruota a stella
- +** — **Roue à bras**  
GB Arm wheel  
D Armräder  
NL Spaak kettingwiel  
I Ruota a braccio



Type	24B
a1	24.1
a2	71.5
a3	120.3



		SIMPLEX						DUPLEX						TRIPLEX					
Z	De		Type	P	R	kg	art. n°		Type	P	R	kg	art. n°		Type	P	R	kg	art. n°
15	199	7540	JO	47	12		106BB124015	7540	JO	45	36		106BB224015	9085	JO	68	60		106BB324015
17	222	7540	JO	47	12		106BB124017	9560	ZO	45	36		106BB224017	10095	JO	72	60		106BB324017
19	246	7540	JO	47	12		106BB124019	9560	ZO	45	36		106BB224019	10095	JO	72	60		106BB324019
20	262	7540	JO	47	12		106BB124020	9560	ZO	45	36		106BB224020	10095	ZO	70	60		106BB324020
21	274	9560	JO	32	48		106BB124021	9560	ZO	45	36		106BB224021	115105	ZO	70	60		106BB324021
23	298	9560	JO	32	48		106BB124023	9560	ZO	45	36		106BB224023	115105	Z+	70	60		106BB324023
25	322	9560	JO	32	48		106BB124025	9560	ZO	45	36		106BB224025	115105	Z+	70	60		106BB324025
30	382	9560	JO	39	41		106BB124030	10095	TO	60	59		106BB224030	115105	Z+	70	60		106BB324030
38	478	9560	JO	39	41		106BB124038	10095	TI	60	59		106BB224038	115105	Z+	70	60		106BB324038
57	707	9560	JI	39	41		106BB124057	10095	T+	60	59		106BB224057	115105	Z+	70	60		106BB324057
76	936	9560	JI	39	41		106BB124076	10095	T+	60	59		106BB224076	115105	Z+	70	60		106BB324076

!! remarque / opmerking / observation / Bemerkung ----> pg 0 !!

: Moyeu / Klembus / Bush / Spannbuschs

1"3/4 x 1"1/4

(ØR 27.94mm)

28B-1-2

Pignons et roues à moyeu SERAX	pour chaînes de transmission
Kettingwielen met SERAX klembussen	voor rollenkettingen
Chain sprockets with SERAX bushings	for roller chains
Kettenräder mit SERAX Klemmbuschen	für Rollenketten

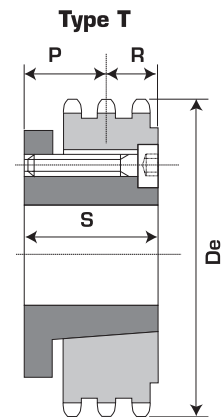
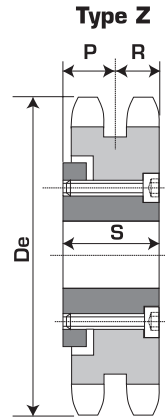
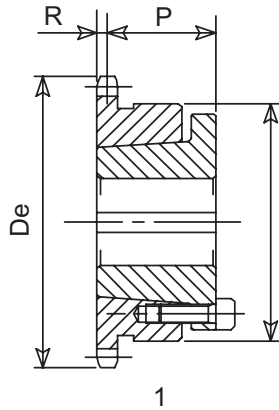
DIN 8187

ISO/R606

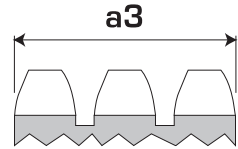
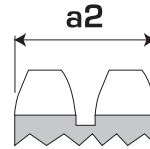
**O** — Pignon plein  
 GB Solid sprocket  
 D Vollritzel  
 NL Vol kettingwiel  
 I Pignone piano

**I** — Roue à toile  
 GB Web wheel  
 D Bodenräder  
 NL Bodem kettingwiel  
 I Ruota a stella

**+** — Roue à bras  
 GB Arm wheel  
 D Armräder  
 NL Spaak kettingwiel  
 I Ruota a braccio



Type	28B
a1	29.4
a2	88.3
a3	



		SIMPLEX						DUPLEX						TRIPLEX					
Z	De		Type	P	R	kg	art. n°		Type	P	R	kg	art. n°		Type	P	R	kg	art. n°
15	235	7540	TO	25	25		106BB128015	8070	JO	53	44		106BB228015						
17	262	9560	TO	35	45		106BB128017	9560	JO	50	44		106BB228017						
19	290	9560	TO	35	45		106BB128019	9560	JO	50	44		106BB228019						
20	300	9560	TO	35	45		106BB128020	10095	TO	68	51		106BB228020						
21	323	9560	TO	35	45		106BB128021	10095	TO	68	51		106BB228021						
23	351	9560	TO	35	45		106BB128023	10095	TO	68	51		106BB228023						
25	378	9560	TO	35	45		106BB128025	115105	TO	69	61		106BB228025						
30	448	9560	TI	43	37		106BB128030	115105	TO	69	61		106BB228030						
38	560	9560	TI	43	37		106BB128038	115105	T+	69	61		106BB228038						
57	828	10095	TI	47	72		106BB128057	115105	T+	69	61		106BB228057						
76	1096	10095	TI	47	72		106BB128076	115105	T+	69	61		106BB228076						

!! remarque / opmerking / observation / Bemerkung ----> pg 0 !!

: Moyeu / Klembus / Bush / Spannbuschs