



**Pignons ASA-DIN 8188 à moyeu
préalésé pour chaînes de transmission**

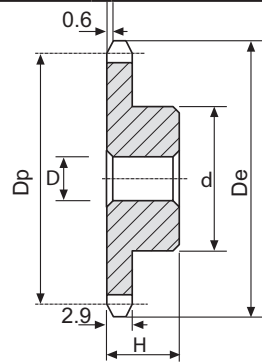
**Kettingwielen ASA met voorboring
voor rollenkettingen DIN 8188**

**Sprockets ASA prebored for
roller chains DIN 8188**

**Kettenräder ASA mit Vorbohrung
für Rollenketten DIN 8188**

1/4" x 1/8" (ØR 3.3mm) ASA 25-1

Pignons ASA à moyeu préalésé	pour chaînes à rouleaux	DIN 8188 ISO/R606
ASA kettingwielen voorgeboord	voor rollenkettingen	
Sprockets ASA prebored	for roller chains	
Kettenräder ASA mit Vorbohrung	für Rollenketten	



SIMPLEX

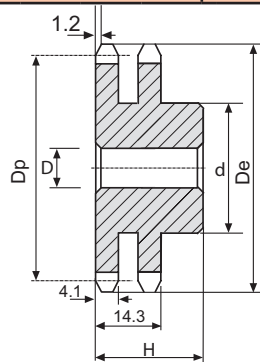
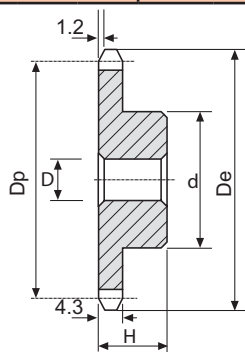
Z	De	Dp	d	D	H	kg	art. n°
8	19.4	16.58	10	6	12	0.02	105A104008
9	21.4	18.56	11.5	6	12	0.02	105A104009
10	23.3	20.55	13	6	12	0.02	105A104010
11	25.3	22.54	15	8	13	0.02	105A104011
12	27.3	24.53	17	8	13	0.03	105A104012
13	29.3	26.53	17	8	13	0.03	105A104013
14	31.3	28.53	17	8	13	0.04	105A104014
15	33.3	30.53	20	8	13	0.05	105A104015
16	35.3	32.55	22	8	14	0.06	105A104016
17	37.3	34.55	22	8	14	0.07	105A104017
18	39.4	36.56	25	8	14	0.08	105A104018
19	41.4	38.58	25	8	14	0.09	105A104019
20	43.4	40.58	25	8	14	0.10	105A104020
21	45.4	42.60	30	8	14	0.11	105A104021
22	47.4	44.62	30	8	14	0.12	105A104022
23	49.4	46.63	30	8	14	0.14	105A104023
24	51.4	48.64	30	8	14	0.18	105A104024
25	53.5	50.66	30	8	14	0.20	105A104025
27	59.5	54.69	30	10	16	0.22	105A104027
28	63.6	56.71	30	10	16	0.25	105A104028
30	67.6	60.75	30	10	16	0.27	105A104030
32	71.6	64.78	30	12	16	0.29	105A104032
34	73.6	68.82	30	12	16	0.28	105A104034
35	75.6	70.84	30	12	16	0.30	105A104035
36	77.7	72.85	30	12	16	0.31	105A104036

!! remarque / opmerking / observation / Bemerkung ----> pg 0 !!

Mat. Fe50

3/8" x 3/16" (ØR 5.08mm) ASA 35-1-2

Pignons ASA à moyeu préalésé	pour chaînes de transmission	DIN 8188 ISO/R606
ASA kettingwielen vorgeboord	voor rollenkettingen	
Sprockets ASA prebored	for roller chains	
Kettenräder ASA mit Vorbohrung	für Rollenketten	



SIMPLEX

DUPLEX

Z	De	Dp	d	D	H	kg	art. n°	d	D	H	kg	art. n°					
10	35.70	30.82	20	8	22	0.05	105A106010										
11	38.69	33.80	22	8	25	0.08	105A106011										
12	41.68	36.80	25	8	25	0.10	105A106012										
13	44.68	39.80	28	10	25	0.12	105A106013	28	10	30	0.16	105A206013					
14	47.68	42.80	31	10	25	0.15	105A106014	31	10	30	0.19	105A206014					
15	50.69	45.81	34	10	25	0.19	105A106015	34	10	30	0.23	105A206015					
16	53.70	48.82	37	10	28	0.24	105A106016	37	12	30	0.27	105A206016					
17	56.72	51.83	38	10	28	0.28	105A106017	40	12	30	0.31	105A206017					
18	59.73	54.85	38	10	28	0.32	105A106018	43	12	30	0.36	105A206018					
19	62.75	57.87	46	10	28	0.36	105A106019	46	12	30	0.42	105A206019					
20	65.77	60.89	46	10	28	0.38	105A106020										
21	68.79	63.91	48	10	28	0.41	105A106021	52	16	30	0.51	105A206021					
22	71.81	66.93	52	12	28	0.45	105A106022	55	16	30	0.57	105A206022					
23	74.83	69.95	52	12	28	0.49	105A106023	58	16	30	0.64	105A206023					
24	77.85	72.97	52	12	28	0.54	105A106024	61	16	30	0.71	105A206024					
25	80.88	76.00	58	12	28	0.60	105A106025	64	16	30	0.78	105A206025					
26	83.90	79.02	58	12	28	0.66	105A106026										
27	86.93	82.04	58	12	28	0.67	105A106027	70	16	30	0.94	105A206027					
28	89.95	85.07	60	12	28	0.68	105A106028	73	16	30	1.02	105A206028					
29	91.80	88.09	60	12	28	0.70	105A106029										
30	96.00	91.12	60	12	30	0.72	105A106030										

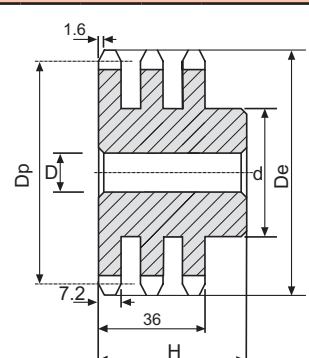
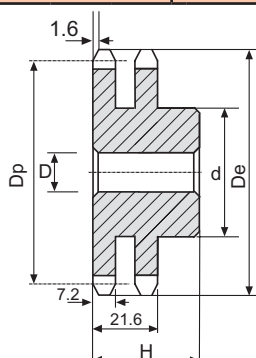
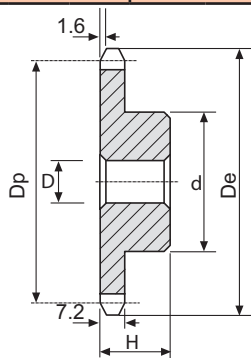
!! remarque / opmerking / observation / Bemerkung ----> pg 0 !!

Mat C43

1/2" x 5/16" (ØR 7.94mm) ASA 40-1-2-3

Pignons ASA à moyeu préalésé	pour chaînes de transmission
ASA kettingwielen voorgeboord	voor rollenkettingen
Sprockets ASA prebored	for roller chains
Kettenräder ASA mit Vorbohrung	für Rollenketten

DIN 8188 ISO/R606



SIMPLEX

DUPLEX

TRIPLEX

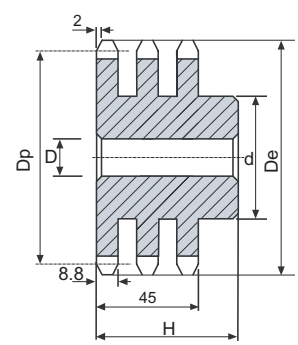
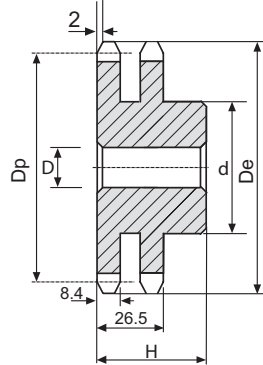
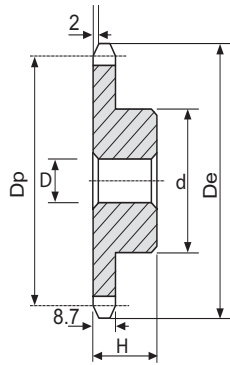
Z	De	Dp	d	D	H	kg	art. n°	d	D	H	kg	art. n°				
10	47.66	41.10	26	10	25	0.12	105A108010									
11	51.64	45.07	29	10	25	0.14	105A108011									
12	55.63	49.07	33	10	28	0.20	105A108012						35	14	50	105A308012
13	59.63	53.06	37	10	28	0.26	105A108013	38	12	35	0.35	105A208013	38	14	50	105A308013
14	63.63	57.07	41	10	28	0.32	105A108014	42	12	35	0.43	105A208014	42	14	50	105A308014
15	67.64	61.09	45	10	28	0.38	105A108015	46	12	35	0.52	105A208015	46	14	50	105A308015
16	71.66	65.10	50	12	28	0.45	105A108016	50	16	38	0.62	105A208016	50	16	50	105A308016
17	75.68	69.11	52	12	28	0.50	105A108017	54	16	38	0.73	105A208017	54	16	50	105A308017
18	79.70	73.14	56	12	28	0.58	105A108018	58	16	38	0.81	105A208018	58	16	50	105A308018
19	83.72	77.16	60	12	28	0.67	105A108019	62	16	38	0.97	105A208019	62	16	50	105A308019
20	87.74	81.19	64	12	28	0.77	105A108020	66	16	38	1.12	105A208020	66	16	50	105A308020
21	91.77	85.22	68	14	28	0.84	105A108021	70	16	40	1.28	105A208021	70	20	55	105A308021
22	95.80	89.24	70	14	28	0.91	105A108022	70	16	40	1.37	105A208022	70	20	55	105A308022
23	99.83	93.27	70	14	28	0.94	105A108023	70	16	40	1.46	105A208023	70	20	55	105A308023
24	103.86	97.29	70	14	28	0.97	105A108024	75	16	40	1.63	105A208024	75	20	55	105A308024
25	107.89	101.33	70	14	28	1.01	105A108025	80	16	40	1.82	105A208025	80	20	55	105A308025
26	111.92	105.36	70	16	30	1.09	105A108026	85	16	40	2.01	105A208026	85	20	55	105A308026
27	115.96	109.40	70	16	30	1.13	105A108027	85	16	40	2.12	105A208027	85	20	55	105A308027
28	119.99	113.42	70	16	30	1.16	105A108028	90	16	40	2.33	105A208028	90	20	55	105A308028
30	128.06	121.50	80	16	30	1.46	105A108030	100	16	40	2.79	105A208030				
32	136.13	129.56	90	16	30	1.78	105A108032									
35	148.24	141.68	90	16	30	1.92	105A108035									
36	152.28	145.72	90	16	35	2.21	105A108036									
38	160.35	153.80	90	16	35	2.32	105A108038									
40	168.43	161.87	90	16	35	2.43	105A108040									

!! remarque / opmerking / observation / Bemerkung ----> pg 0 !!

Mat C43

5/8" x 3/8" (ØR 10.16mm) ASA 50-1-2-3

Pignons ASA à moyeu préalésé	pour chaînes de transmission	DIN 8188 ISO/R606
ASA kettingwielen vorgeboord	voor rollenkettingen	
Sprockets ASA prebored	for roller chains	
Kettenräder ASA mit Vorbohrung	für Rollenketten	



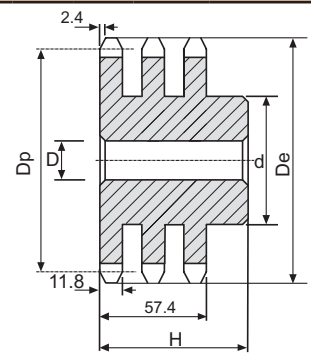
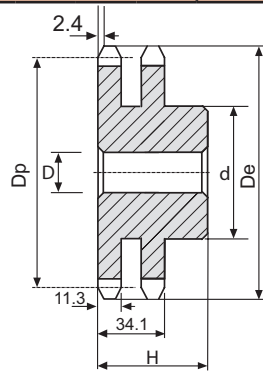
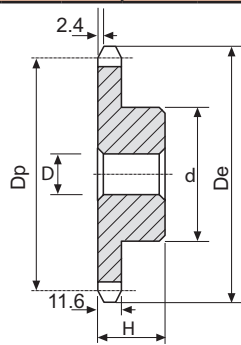
	SIMPLEX	DUPLEX	TRIPLEX
--	---------	--------	---------

Z	De	Dp	d	D	H	kg	art. n°	d	D	H	kg	art. n°	d	D	H	kg	art. n°	
8	47.0	41.48	25	10	25	0.11	105A110008											
9	52.6	46.42	30	10	25	0.16	105A110009											
10	57.5	51.37	35	10	25	0.22	105A110010											
11	63.0	56.34	37	12	30	0.29	105A110011											
12	68.0	61.34	42	12	30	0.37	105A110012						44	16	55			105A310012
13	73.0	66.32	47	12	30	0.46	105A110013	49	14	40	0.67	105A210013	49	16	55			105A310013
14	78.0	71.34	52	12	30	0.56	105A110014	54	14	40	0.82	105A210014	54	16	55			105A310014
15	83.0	76.36	57	12	30	0.67	105A110015	59	14	40	0.97	105A210015	59	16	55			105A310015
16	88.0	81.37	60	12	30	0.75	105A110016	64	16	45	1.25	105A210016	64	16	60			105A310016
17	93.0	86.39	60	12	30	0.87	105A110017	69	16	45	1.45	105A210017	69	16	60			105A310017
18	98.3	91.42	70	14	30	1.00	105A110018	74	16	45	1.52	105A210018	74	16	60			105A310018
19	103.3	96.45	70	14	30	1.15	105A110019	79	16	45	1.67	105A210019	79	16	60			105A310019
20	108.4	101.49	75	14	30	1.20	105A110020	84	16	45	2.14	105A210020	84	16	60			105A310020
21	113.4	106.52	75	16	30	1.35	105A110021	85	16	45	2.27	105A210021	85	20	60			105A310021
22	118.0	111.55	80	16	30	1.40	105A110022	90	16	45	2.54	105A210022	90	20	60			105A310022
23	123.4	116.58	80	16	30	1.47	105A110023	95	16	45	2.81	105A210023	95	20	60			105A310023
24	128.3	121.62	80	16	30	1.53	105A110024	100	16	45	3.11	105A210024	100	20	60			105A310024
25	134.0	126.66	80	16	30	1.60	105A110025	105	16	45	3.14	105A210025	105	20	60			105A310025
26	139.0	131.70	85	20	35	1.96	105A110026						110	20	60			105A310026
27	144.0	136.75	85	20	35	2.03	105A110027						110	20	60			105A310027
28	148.7	141.78	90	20	35	2.25	105A110028						115	20	60			105A310028
29	153.8	146.83	90	20	35	2.33	105A110029											
30	158.8	151.87	90	20	35	2.41	105A110030											
31	163.9	156.92	95	20	35	2.64	105A110031											
32	168.9	161.95	95	20	35	2.73	105A110032											
33	174.5	167.00	95	20	35	2.82	105A110033											
34	179.0	172.05	95	20	35	2.91	105A110034											
35	184.1	177.10	95	20	35	3.01	105A110035											
36	189.1	182.15	100	20	35	3.26	105A110036											
37	194.2	187.20	100	20	35	3.36	105A110037											
38	199.2	192.24	100	20	35	3.47	105A110038											
39	204.2	197.29	100	20	35	3.57	105A110039											
40	209.3	202.34	100	20	35	3.68	105A110040											

!! remarque / opmerking / observation / Bemerkung ----> pg 0 !!

3/4" x 1/2" (ØR 11.91mm) ASA 60-1-2-3

Pignons ASA à moyeu préalésé	pour chaînes de transmission	DIN 8188 ISO/R606
ASA kettingwielen vorgeboord	voor rollenkettingen	
Sprockets ASA prebored	for roller chains	
Kettenräder ASA mit Vorbohrung	für Rollenketten	



	SIMPLEX	DUPLEX	TRIPLEX
--	---------	--------	---------

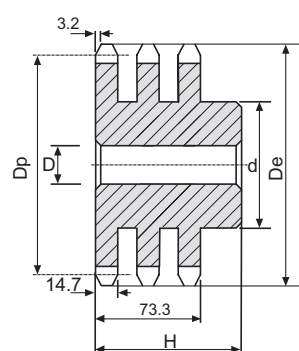
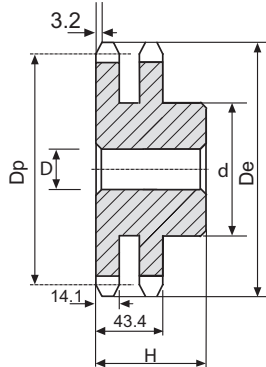
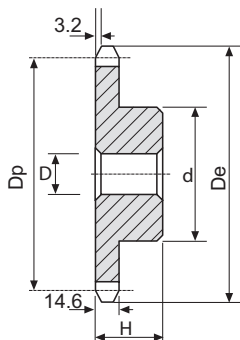
Z	De	Dp	d	D	H	kg	art. n°	d	D	H	kg	art. n°	d	D	H	kg	art. n°
10	71.54	61.64	42	12	30	0.38	105A112010	42	12	45	0.58	105A212010					
11	77.51	67.61	46	16	35	0.50	105A112011	47	16	50	0.80	105A212011					
12	83.49	73.60	52	16	35	0.64	105A112012	53	16	50	1.01	105A212012	53	20	70		105A312012
13	89.49	79.59	58	16	35	0.80	105A112013	59	16	50	1.24	105A212013	59	20	70		105A312013
14	95.50	85.61	64	16	35	0.97	105A112014	65	16	50	1.45	105A212014	65	20	70		105A312014
15	101.52	91.63	70	16	35	1.16	105A112015	71	16	50	1.73	105A212015	71	20	70		105A312015
16	107.54	97.65	75	16	35	1.34	105A112016	77	20	50	2.03	105A212016	77	20	70		105A312016
17	113.56	103.67	80	16	35	1.53	105A112017	83	20	50	2.35	105A212017	83	20	70		105A312017
18	119.59	109.71	80	16	35	1.61	105A112018	89	20	50	2.70	105A212018	89	20	70		105A312018
19	125.63	115.75	80	16	35	1.70	105A112019	95	20	50	3.06	105A212019	95	20	70		105A312019
20	131.67	121.78	80	16	35	1.84	105A112020	100	20	50	3.45	105A212020	100	20	70		105A312020
21	137.71	127.82	90	20	40	2.35	105A112021	100	20	50	3.69	105A212021	100	20	70		105A312021
22	143.75	133.86	90	20	40	2.45	105A112022	100	20	50	3.96	105A212022	100	20	70		105A312022
23	149.79	139.90	90	20	40	2.56	105A112023	110	20	50	4.50	105A212023	110	20	70		105A312023
24	155.84	145.94	90	20	40	2.67	105A112024	110	20	50	4.81	105A212024	110	20	70		105A312024
25	161.88	152.00	90	20	40	2.79	105A112025	120	20	50	5.40	105A212025	120	20	70		105A312025
26	167.93	158.04	95	20	40	3.08	105A112026	120	20	50	5.73	105A212026					
27	173.98	164.09	95	20	40	3.21	105A112027	120	20	50	6.03	105A212027					
28	180.03	170.13	95	20	40	3.34	105A112028	120	20	50	6.43	105A212028					
30	192.14	182.25	95	20	40	3.62	105A112029	120	20	50	7.18	105A212029					

!! remarque / opmerking / observation / Bemerkung ----> pg 0 !!

Mat C43

1" x 5/8" (ØR 15.88mm) ASA 80-1-2-3

Pignons ASA à moyeu préalésé	pour chaînes de transmission	DIN 8188 ISO/R606
ASA kettingwielen vorgeboord	voor rollenkettingen	
Sprockets ASA prebored	for roller chains	
Kettenräder ASA mit Vorbohrung	für Rollenketten	



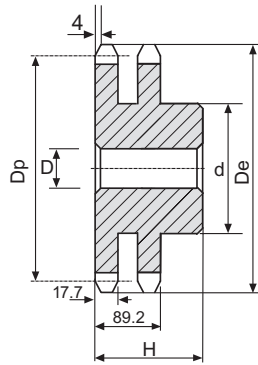
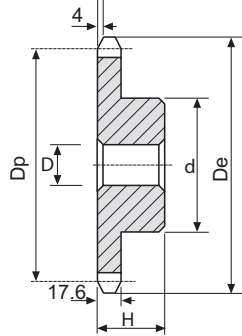
SIMPLEX								DUPLEX					TRIPLEX				
---------	--	--	--	--	--	--	--	--------	--	--	--	--	---------	--	--	--	--

Z	De	Dp	d	D	H	kg	art. n°	d	D	H	kg	art. n°	d	D	H	kg	art. n°	
8	77.49	66.37	42	16	35	0.47	105A116008											
9	87.38	74.27	50	16	35	0.65	105A116009											
10	95.32	82.19	55	16	35	0.82	105A116010											
11	103.28	90.14	61	16	40	1.13	105A116011											
12	111.26	98.14	69	16	40	1.42	105A116012	72	20	70	3.01	105A216012	72	25	100		105A316012	
13	119.26	106.12	78	16	40	1.77	105A116013	78	20	70	3.22	105A216013	78	25	100		105A316013	
14	127.27	114.15	84	16	40	2.07	105A116014	86	20	70	3.82	105A216014	86	25	100		105A316014	
15	135.29	122.17	92	16	40	2.46	105A116015	94	20	70	4.51	105A216015	94	25	100		105A316015	
16	143.32	130.20	100	20	45	3.13	105A116016	102	20	70	5.17	105A216016	102	30	100		105A316016	
17	151.35	138.22	100	20	45	3.34	105A116017	118	20	70	5.97	105A216017	110	30	100		105A316017	
18	159.39	146.28	100	20	45	3.55	105A116018	126	20	70	6.84	105A216018	118	30	100		105A316018	
19	167.44	154.33	100	20	45	3.78	105A116019	130	20	70	7.75	105A216019	126	30	100		105A316019	
20	175.49	162.38	100	20	45	4.02	105A116020	130	20	70	8.43	105A216020	130	30	100		105A316020	
21	183.54	170.43	110	20	50	5.01	105A116021	130	20	70	9.01	105A216021						
22	191.60	178.48	110	20	50	5.26	105A116022											
23	199.66	186.53	110	20	50	5.56	105A116023											
24	207.72	194.59	110	20	50	5.85	105A116024											
25	215.78	202.66	110	20	50	6.16	105A116025											
26	223.84	210.72	120	20	50	6.96	105A116026											
27	231.91	218.79	120	20	50	7.29	105A116027											
28	239.98	226.85	120	20	50	7.64	105A116028											
30	256.12	243.00	120	20	50	7.96	105A116030											

!! remarque / opmerking / observation / Bemerkung ----> pg 0 !!

1"1/4 x 3/4" (ØR 19.05mm) ASA 100-1-2

Pignons ASA à moyeu préalésé	pour chaînes de transmission	DIN 8188 ISO/R606
ASA kettingwielen vorgeboord	voor rollenkettingen	
Sprockets ASA prebored	for roller chains	
Kettenräder ASA mit Vorbohrung	für Rollenketten	



SIMPLEX

DUPLEX

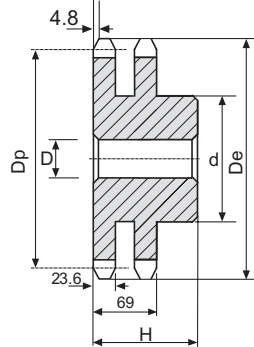
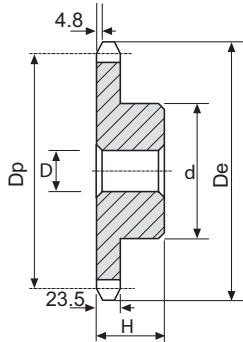
Z	De	Dp	d	D	H	kg	art. n°	d	D	H	kg	art. n°					
8	98.1	82.96	53	20	40	0.85	105A120008										
9	108.0	92.94	63	20	40	1.18	105A120009										
10	117.9	102.74	70	20	40	1.57	105A120010										
11	127.8	112.68	77	20	45	2.04	105A120011										
12	137.8	122.68	88	20	45	2.58	105A120012	90	20	80		105A220012					
13	147.8	132.65	98	20	45	3.15	105A120013	100	20	80		105A220013					
14	157.8	142.68	108	20	45	3.78	105A120014	110	20	80		105A220014					
15	167.9	152.72	118	20	45	4.47	105A120015	120	20	80		105A220015					
16	177.9	162.75	120	25	50	5.25	105A120016	120	25	80		105A220016					
17	187.9	172.78	120	25	50	5.61	105A120017	120	25	80		105A220017					
18	198.0	182.85	120	25	50	5.99	105A120018										
19	208.1	192.91	120	25	50	6.40	105A120019										
20	218.1	202.98	120	25	50	6.82	105A120020										
21	228.2	213.04	140	25	55	8.79	105A120021										
22	238.3	223.11	140	25	55	9.27	105A120022										
23	248.3	233.17	140	25	55	9.77	105A120023										
24	258.4	243.23	140	25	55	10.30	105A120024										
25	268.5	253.33	140	25	55	10.85	105A120025										

!! remarque / opmerking / observation / Bemerkung ----> pg 0 !!

Mat C43

1"1/2 x 1" (ØR 22.22mm) ASA 120-1-2

Pignons ASA à moyeu préalésé	pour chaînes de transmission	DIN 8188 ISO/R606
ASA kettingwielen vorgeboord	voor rollenkettingen	
Sprockets ASA prebored	for roller chains	
Kettenräder ASA mit Vorbohrung	für Rollenketten	



SIMPLEX

DUPLEX

Z	De	Dp	d	D	H	kg	art. n°	d	D	H	kg	art. n°						
8	119.04	99.55	58	20	45	1.63	105A124008											
9	130.88	111.40	70	20	45	2.01	105A124009											
10	142.77	123.29	80	20	45	2.67	105A124010											
11	154.71	135.21	90	25	50	3.45	105A124011											
12	166.69	147.22	102	25	50	4.26	105A124012	102	25	100		105A224012						
13	178.68	159.18	114	25	50	5.22	105A124013	114	25	100		105A224013						
14	190.70	171.22	128	25	50	6.29	105A124014	128	25	100		105A224014						
15	202.73	183.26	140	25	50	7.05	105A124015	140	25	100		105A224015						

!! remarque / opmerking / observation / Bemerkung ----> pg 0 !!

Mat C43