



Bestaat in één of twee delen

Volledig uit staal (+ fosfatering)

Zeer starre verbinding

Compact

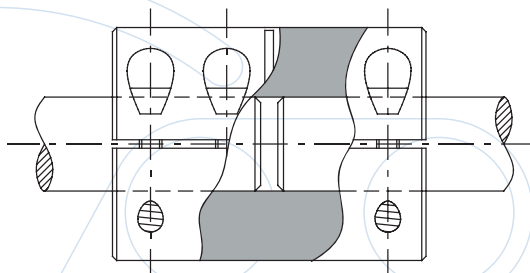
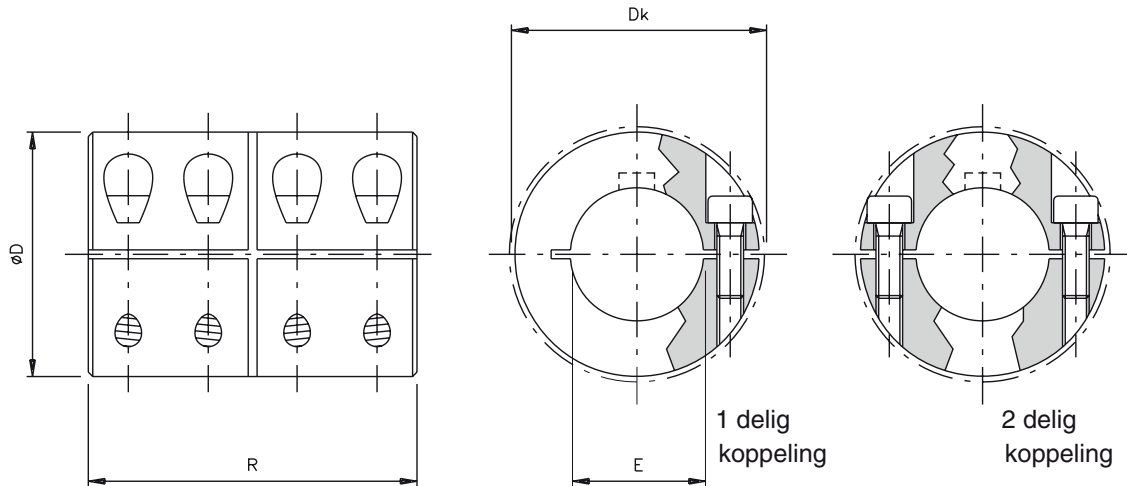
## Technische gegevens

Koppeling grootte ref.	Max. koppel Uitvoering B [Nm]	Max. koppel Uitvoering C [Nm]	Max. toerental [min <sup>-1</sup> ]	Inertie [Kgm <sup>2</sup> ]	Massa [kg]	aanhaalmoment van de bouten [Nm]
10	44	38	5500	0,000028	0,25	5,2
15	99	94	4200	0,000080	0,42	10,5
20	141	141	3800	0,000172	0,65	17
25	171	177	3500	0,000305	0,87	17
30	195	212	3200	0,000503	1,11	17
35	353	380	2700	0,001098	1,75	43
40	386	434	2500	0,001615	2,13	43
45	436	488	2200	0,002896	2,96	43
50	790	860	1900	0,005284	4,31	84



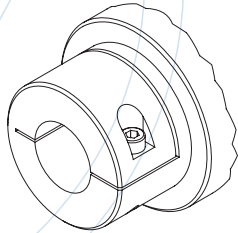
# Afmetingen

Koppeling grootte ref.	D [mm]	R [mm]	Dk [mm]	E H8 [mm]	S1 Uitvoering B [mm]	S1 Uitvoering C [mm]
10	32	45	33	10	4 x M4	8 x M4
15	40	50	--	15	4 x M5	8 x M5
20	45	65	47	20	4 x M6	8 x M6
25	50	70	52	25	4 x M6	8 x M6
30	55	75	57	30	4 x M6	8 x M6
35	65	85	70	35	4 x M8	8 x M8
40	70	90	74	40	4 x M8	8 x M8
45	80	100	83	45	4 x M8	8 x M8
50	90	110	95	50	4 x M10	8 x M10

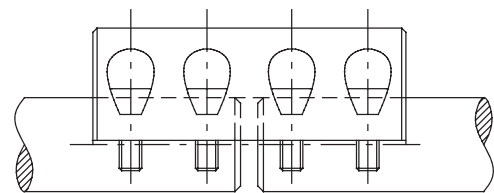
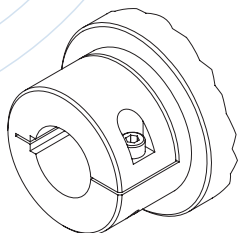


Bevestiging type B

B

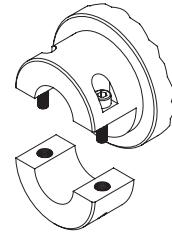


B1

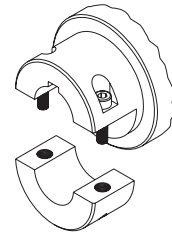


Bevestiging type C

C



C1



De opgegeven afmetingen kunnen  
zonder voorafgaande aankondiging  
gewijzigd worden

VERMEIRE TRANSMISSIONS SA  
Rue de la Filature, 41  
B-4800 ENSIVAL (VERVIERS)  
T +32 (0)87 32 23 60  
F +32 (0)87 31 50 71

VERMEIRE AANDRIJVINGEN NV  
Traktaartweg 17  
B-9050 GENT  
T +32 (0)9 222 57 61  
F +32 (0)9 221 72 41

[www.vermeire.com](http://www.vermeire.com)

