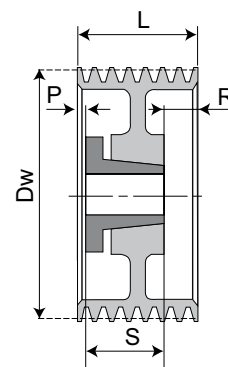
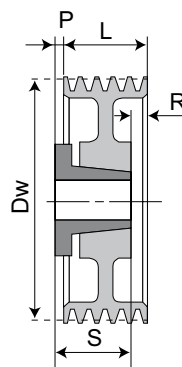
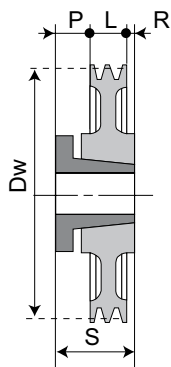
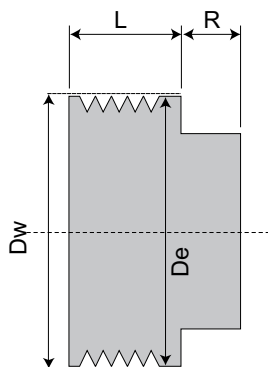
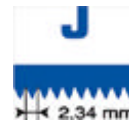


**Poulies à moyeu SERAX pour courroies poly-V®**  
**SERAX schijven voor poly-V® riemen**



M

Z

L

F

La référence poulie désigne le diamètre primitif.  
 De artikelcode geeft tevens de steekcirkeldiameter aan.

Une quantité minimum de commande est requise pour certaine référence.

Nous consulter.

Voor enkele artikelen wordt een minimum afname verlangd.

Gelieve ons te raadplegen

O : Poulie pleine  
 Volle schijf

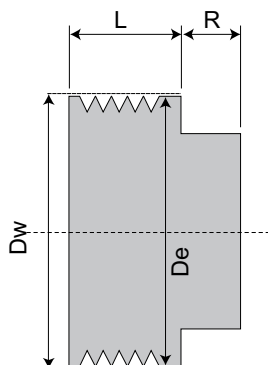
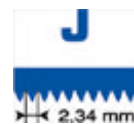
I : Poulie à toile  
 Bodemschijf

+ : Poulie à bras  
 Spaakschijf

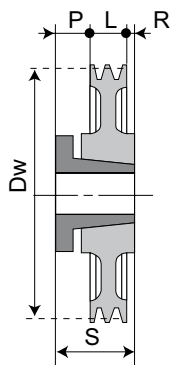
| Dw | N  | code   | moyeu bus | A max | type | De | L  | P  | R  | S  |
|----|----|--------|-----------|-------|------|----|----|----|----|----|
| 20 | 8  | 8J20M  |           |       | M    | 18 | 24 | 0  | 6  | 30 |
| 25 | 8  | 8J25M  |           |       | M    | 23 | 24 | 0  | 6  | 30 |
| 32 | 8  | 8J32M  |           |       | M    | 30 | 24 | 0  | 6  | 30 |
|    | 12 | 12J32M |           |       | M    | 30 | 32 | 0  | 8  | 40 |
| 36 | 8  | 8J36M  |           |       | M    | 34 | 24 | 0  | 6  | 30 |
|    | 12 | 12J36M |           |       | M    | 34 | 32 | 0  | 8  | 40 |
| 40 | 8  | 8J40M  |           |       | M    | 38 | 24 | 0  | 6  | 30 |
|    | 12 | 12J40M |           |       | M    | 38 | 32 | 0  | 8  | 40 |
| 45 | 8  | 8J45M  |           |       | M    | 43 | 24 | 0  | 6  | 30 |
|    | 12 | 12J45M |           |       | M    | 43 | 32 | 0  | 8  | 40 |
|    | 16 | 16J45M |           |       | M    | 43 | 42 | 0  | 6  | 48 |
|    | 20 | 20J45M |           |       | M    | 43 | 52 | 0  | 6  | 58 |
| 50 | 8  | 8J50M  |           |       | M    | 48 | 24 | 0  | 6  | 30 |
|    | 12 | 12J50M |           |       | M    | 48 | 32 | 0  | 8  | 40 |
|    | 16 | 16J50M |           |       | M    | 48 | 42 | 0  | 6  | 48 |
|    | 20 | 20J50M |           |       | M    | 48 | 52 | 0  | 6  | 58 |
| 56 | 8  | 8J56M  |           |       | M    | 54 | 24 | 0  | 0  | 30 |
|    | 12 | 12J56M |           |       | M    | 54 | 32 | 0  | 5  | 40 |
|    | 16 | 16J56M |           |       | M    | 54 | 42 | 0  | 15 | 48 |
|    | 20 | 20J56M |           |       | M    | 54 | 52 | 0  | 6  | 58 |
| 63 | 8  | 8J63B  | 2016      | 20    | LO   | 61 | 24 | 3  | 1  | 27 |
|    | 12 | 12J63B | 2016      | 20    | FO   | 61 | 32 | 0  | 0  | 27 |
|    | 16 | 16J63B | 2016      | 20    | FO   | 61 | 42 | 0  | 5  | 27 |
|    | 20 | 20J63M |           |       | M    | 61 | 52 | 0  | 15 | 58 |
| 71 | 8  | 8J71B  | 2825      | 30    | ZO   | 69 | 24 | 12 | 1  | 37 |
|    | 12 | 12J71B | 2825      | 30    | LO   | 69 | 32 | 5  | 0  | 37 |
|    | 16 | 16J71B | 2825      | 30    | FO   | 69 | 42 | 0  | 5  | 37 |
|    | 20 | 20J71B | 2825      | 30    | FO   | 69 | 52 | 0  | 15 | 37 |
| 75 | 8  | 8J75B  | 2825      | 30    | ZO   | 73 | 24 | 12 | 1  | 37 |

| Dw  | N  | code    | moyeu bus | A max | type | De  | L  | P  | R  | S  |
|-----|----|---------|-----------|-------|------|-----|----|----|----|----|
| 75  | 12 | 12J75B  | 2825      | 30    | LO   | 73  | 32 | 5  | 0  | 37 |
|     | 16 | 16J75B  | 2825      | 30    | FO   | 73  | 42 | 0  | 5  | 37 |
|     | 20 | 20J75B  | 2825      | 30    | FO   | 73  | 52 | 0  | 15 | 37 |
| 80  | 8  | 8J80B   | 2825      | 30    | ZO   | 78  | 24 | 12 | 1  | 37 |
|     | 12 | 12J80B  | 2825      | 30    | LO   | 78  | 32 | 5  | 0  | 37 |
|     | 16 | 16J80B  | 2825      | 30    | FO   | 78  | 42 | 0  | 5  | 37 |
|     | 20 | 20J80B  | 2825      | 30    | FO   | 78  | 52 | 0  | 15 | 37 |
| 85  | 8  | 8J85B   | 2825      | 30    | ZO   | 83  | 24 | 12 | 1  | 37 |
|     | 12 | 12J85B  | 2825      | 30    | LO   | 83  | 32 | 5  | 0  | 37 |
|     | 16 | 16J85B  | 2825      | 30    | FO   | 83  | 42 | 0  | 5  | 37 |
|     | 20 | 20J85B  | 2825      | 30    | FO   | 83  | 52 | 0  | 15 | 37 |
| 90  | 8  | 8J90B   | 2825      | 30    | ZO   | 88  | 24 | 12 | 1  | 37 |
|     | 12 | 12J90B  | 2825      | 30    | LO   | 88  | 32 | 5  | 0  | 37 |
|     | 16 | 16J90B  | 2825      | 30    | FO   | 88  | 42 | 0  | 5  | 37 |
|     | 20 | 20J90B  | 2825      | 30    | FO   | 88  | 52 | 0  | 15 | 37 |
| 95  | 8  | 8J95B   | 3825      | 40    | ZO   | 93  | 24 | 12 | 1  | 37 |
|     | 12 | 12J95B  | 3825      | 40    | LO   | 93  | 32 | 5  | 0  | 37 |
|     | 16 | 16J95B  | 3825      | 40    | FO   | 93  | 42 | 0  | 5  | 37 |
|     | 20 | 20J95B  | 3825      | 40    | FO   | 93  | 52 | 0  | 15 | 37 |
| 100 | 8  | 8J100B  | 3825      | 40    | ZO   | 98  | 24 | 12 | 1  | 37 |
|     | 12 | 12J100B | 3825      | 40    | LO   | 98  | 32 | 5  | 0  | 37 |
|     | 16 | 16J100B | 3825      | 40    | FO   | 98  | 42 | 0  | 5  | 37 |
|     | 20 | 20J100B | 3825      | 40    | FO   | 98  | 52 | 0  | 15 | 37 |
| 106 | 8  | 8J106B  | 3825      | 40    | ZO   | 104 | 24 | 12 | 1  | 37 |
|     | 12 | 12J106B | 3825      | 40    | LO   | 104 | 32 | 5  | 0  | 37 |
|     | 16 | 16J106B | 3825      | 40    | FO   | 104 | 42 | 0  | 5  | 37 |
|     | 20 | 20J106B | 3825      | 40    | FO   | 104 | 52 | 0  | 15 | 37 |
| 112 | 8  | 8J112B  | 3825      | 40    | ZO   | 110 | 24 | 12 | 1  | 37 |
|     | 12 | 12J112B | 3825      | 40    | LO   | 110 | 32 | 5  | 0  | 37 |

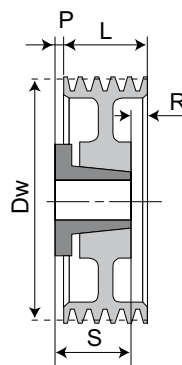
# Poulies à moyeu SERAX pour courroies poly-V® SERAX schijven voor poly-V® riemen



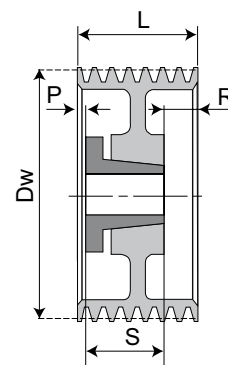
M



Z



L



F

La référence poulie désigne le diamètre primitif.  
De artikelcode geeft tevens de steekcirkeldiameter aan.

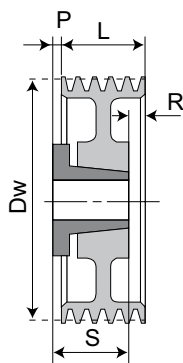
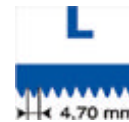
Une quantité minimum de commande est requise pour certaine référence. Nous consulter.  
Voor enkele artikelen wordt een minimum afname verlangd. Gelieve ons te raadplegen

O : Poulie pleine / Volle schijf  
I : Poulie à toile / Bodemschijf  
+ : Poulie à bras / Spaakschijf

| Dw  | N  | code    | moyeu bus | A max | type | De  | L  | P  | R | S  |
|-----|----|---------|-----------|-------|------|-----|----|----|---|----|
| 112 | 16 | 16J112B | 3825      | 40    | FO   | 110 | 42 | 0  | 5 | 37 |
|     | 20 | 20J112B | 4830      | 50    | FO   | 110 | 52 | 0  | 7 | 45 |
| 118 | 8  | 8J118B  | 3825      | 40    | LI   | 116 | 24 | 13 | 0 | 37 |
|     | 12 | 12J118B | 3825      | 40    | LI   | 116 | 32 | 5  | 0 | 37 |
|     | 16 | 16J118B | 4830      | 50    | LO   | 116 | 42 | 3  | 0 | 45 |
|     | 20 | 20J118B | 4830      | 50    | FO   | 116 | 52 | 0  | 7 | 45 |
| 125 | 8  | 8J125B  | 3825      | 40    | LI   | 123 | 24 | 13 | 0 | 37 |
|     | 12 | 12J125B | 3825      | 40    | LI   | 123 | 32 | 5  | 0 | 37 |
|     | 16 | 16J125B | 4830      | 50    | LO   | 123 | 42 | 3  | 0 | 45 |
|     | 20 | 20J125B | 5040      | 55    | LO   | 123 | 52 | 6  | 0 | 58 |
| 132 | 8  | 8J132B  | 3825      | 40    | LI   | 130 | 24 | 13 | 0 | 37 |
|     | 12 | 12J132B | 3825      | 40    | LI   | 130 | 32 | 5  | 0 | 37 |
|     | 16 | 16J132B | 4830      | 50    | LO   | 130 | 42 | 3  | 0 | 45 |
|     | 20 | 20J132B | 5040      | 55    | LO   | 130 | 52 | 6  | 0 | 58 |
| 140 | 8  | 8J140B  | 3825      | 40    | LI   | 138 | 24 | 13 | 0 | 37 |
|     | 12 | 12J140B | 3825      | 40    | LI   | 138 | 32 | 5  | 0 | 37 |
|     | 16 | 16J140B | 4830      | 50    | LO   | 138 | 42 | 3  | 0 | 45 |
|     | 20 | 20J140B | 5040      | 55    | LO   | 138 | 52 | 6  | 0 | 58 |
| 160 | 8  | 8J160B  | 4830      | 50    | LI   | 158 | 24 | 21 | 0 | 45 |
|     | 12 | 12J160B | 3825      | 40    | LI   | 158 | 32 | 5  | 0 | 37 |
|     | 16 | 16J160B | 4830      | 50    | LI   | 158 | 42 | 3  | 0 | 45 |
|     | 20 | 20J160B | 5040      | 55    | LO   | 158 | 52 | 6  | 0 | 58 |
| 180 | 8  | 8J180B  | 4830      | 50    | L+   | 178 | 24 | 21 | 0 | 45 |
|     | 12 | 12J180B | 4830      | 50    | LI   | 178 | 32 | 13 | 0 | 45 |
|     | 16 | 16J180B | 5040      | 55    | LI   | 178 | 42 | 16 | 0 | 58 |
|     | 20 | 20J180B | 5040      | 55    | LI   | 178 | 52 | 6  | 0 | 58 |
| 200 | 8  | 8J200B  | 4830      | 50    | L+   | 198 | 24 | 21 | 0 | 45 |
|     | 12 | 12J200B | 4830      | 50    | LI   | 198 | 32 | 13 | 0 | 45 |
|     | 16 | 16J200B | 5040      | 55    | LI   | 198 | 42 | 16 | 0 | 58 |

| Dw  | N  | code    | moyeu bus | A max | type | De  | L  | P  | R | S  |
|-----|----|---------|-----------|-------|------|-----|----|----|---|----|
| 200 | 20 | 20J200B | 5040      | 55    | LI   | 198 | 52 | 6  | 0 | 58 |
| 224 | 8  | 8J224B  | 4830      | 50    | L+   | 222 | 24 | 21 | 0 | 45 |
|     | 12 | 12J224B | 6035      | 65    | L+   | 222 | 32 | 21 | 0 | 53 |
|     | 16 | 16J224B | 6035      | 65    | L+   | 222 | 42 | 11 | 0 | 53 |
|     | 20 | 20J224B | 6045      | 65    | L+   | 222 | 52 | 11 | 0 | 63 |
| 250 | 8  | 8J250B  | 4830      | 50    | L+   | 248 | 24 | 21 | 0 | 45 |
|     | 12 | 12J250B | 6035      | 65    | L+   | 248 | 32 | 21 | 0 | 53 |
|     | 16 | 16J250B | 6035      | 65    | L+   | 248 | 42 | 11 | 0 | 53 |
|     | 20 | 20J250B | 6045      | 65    | L+   | 248 | 52 | 11 | 0 | 63 |
| 280 | 8  | 8J280B  | 4830      | 50    | L+   | 278 | 24 | 21 | 0 | 45 |
|     | 12 | 12J280B | 6035      | 65    | L+   | 278 | 32 | 21 | 0 | 53 |
|     | 16 | 16J280B | 6035      | 65    | L+   | 278 | 42 | 11 | 0 | 53 |
|     | 20 | 20J280B | 6045      | 65    | L+   | 278 | 52 | 11 | 0 | 63 |
| 315 | 8  | 8J315B  | 6035      | 65    | L+   | 313 | 24 | 29 | 0 | 53 |
|     | 12 | 12J315B | 6035      | 65    | L+   | 313 | 32 | 21 | 0 | 53 |
|     | 16 | 16J315B | 6035      | 65    | L+   | 313 | 42 | 11 | 0 | 53 |
|     | 20 | 20J315B | 6045      | 65    | L+   | 313 | 52 | 11 | 0 | 63 |
| 355 | 8  | 8J355B  | 6035      | 65    | L+   | 353 | 24 | 29 | 0 | 53 |
|     | 12 | 12J355B | 6035      | 65    | L+   | 353 | 32 | 21 | 0 | 53 |
|     | 16 | 16J355B | 6035      | 65    | L+   | 353 | 42 | 11 | 0 | 53 |
|     | 20 | 20J355B | 6045      | 65    | L+   | 353 | 52 | 11 | 0 | 63 |
| 400 | 8  | 8J400B  | 6035      | 65    | L+   | 398 | 24 | 29 | 0 | 53 |
|     | 12 | 12J400B | 6035      | 65    | L+   | 398 | 32 | 21 | 0 | 53 |
|     | 16 | 16J400B | 6035      | 65    | L+   | 398 | 42 | 11 | 0 | 53 |
|     | 20 | 20J400B | 6045      | 65    | L+   | 398 | 52 | 11 | 0 | 63 |

# Poulies à moyeu SERAX pour courroies poly-V® SERAX schijven voor poly-V® riemen



L

La référence poulie désigne le diamètre primitif.  
De artikelcode geeft tevens de steekcirkeldiameter aan.

Une quantité minimum de commande est requise pour certaine référence.  
Nous consulter.

Voor enkele artikelen wordt een minimum afname verlangd.  
Gelieve ons te raadplegen

O : Poulie pleine  
Volle schijf

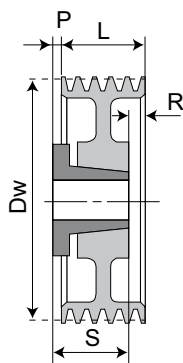
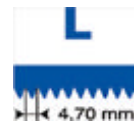
I : Poulie à toile  
Bodemschijf

+ : Poulie à bras  
Spaakschijf

| Dw  | N  | code    | moyeu bus | A max | type | De  | L  | P  | R  | S  |
|-----|----|---------|-----------|-------|------|-----|----|----|----|----|
| 75  | 8  | 8L75B   | 2016      | 20    | LO   | 68  | 46 | 0  | 19 | 27 |
|     | 12 | 12L75B  | 2016      | 20    | LO   | 68  | 67 | 0  | 40 | 27 |
| 80  | 8  | 8L80B   | 2825      | 30    | LO   | 73  | 46 | 0  | 9  | 37 |
|     | 12 | 12L80B  | 2825      | 30    | LO   | 73  | 67 | 0  | 30 | 37 |
| 85  | 8  | 8L85B   | 2825      | 30    | LO   | 78  | 46 | 0  | 9  | 37 |
|     | 12 | 12L85B  | 2825      | 30    | LO   | 78  | 67 | 0  | 30 | 37 |
|     | 16 | 16L85B  | 2825      | 30    | LO   | 78  | 86 | 0  | 49 | 37 |
| 90  | 8  | 8L90B   | 2825      | 30    | LO   | 83  | 46 | 0  | 9  | 37 |
|     | 12 | 12L90B  | 2825      | 30    | LO   | 83  | 67 | 0  | 30 | 37 |
|     | 16 | 16L90B  | 2825      | 30    | LO   | 83  | 86 | 0  | 49 | 37 |
| 95  | 8  | 8L95B   | 2825      | 30    | LO   | 88  | 46 | 0  | 9  | 37 |
|     | 12 | 12L95B  | 2825      | 30    | LO   | 88  | 67 | 0  | 30 | 37 |
|     | 16 | 16L95B  | 2825      | 30    | LO   | 88  | 86 | 0  | 49 | 37 |
| 100 | 8  | 8L100B  | 3825      | 40    | LO   | 93  | 46 | 0  | 9  | 37 |
|     | 12 | 12L100B | 3825      | 40    | LO   | 93  | 67 | 0  | 30 | 37 |
|     | 16 | 16L100B | 3825      | 40    | LO   | 93  | 86 | 0  | 49 | 37 |
| 106 | 8  | 8L106B  | 3825      | 40    | LO   | 99  | 46 | 0  | 9  | 37 |
|     | 12 | 12L106B | 3825      | 40    | LO   | 99  | 67 | 0  | 30 | 37 |
|     | 16 | 16L106B | 3825      | 40    | LO   | 99  | 86 | 0  | 49 | 37 |
| 112 | 8  | 8L112B  | 4830      | 50    | LO   | 105 | 46 | -1 | 0  | 45 |
|     | 12 | 12L112B | 3825      | 40    | LO   | 105 | 67 | 0  | 30 | 37 |
|     | 16 | 16L112B | 3825      | 40    | LO   | 105 | 86 | 0  | 49 | 37 |
| 118 | 8  | 8L118B  | 4830      | 50    | LO   | 111 | 46 | -1 | 0  | 45 |
|     | 12 | 12L118B | 4830      | 50    | LO   | 111 | 67 | 0  | 22 | 45 |
|     | 16 | 16L118B | 4830      | 50    | LO   | 111 | 86 | 0  | 41 | 45 |
| 125 | 8  | 8L125B  | 4830      | 50    | LO   | 118 | 46 | -1 | 0  | 45 |
|     | 12 | 12L125B | 4830      | 50    | LO   | 118 | 67 | 0  | 22 | 45 |
|     | 16 | 16L125B | 4830      | 50    | LO   | 118 | 86 | 0  | 41 | 45 |
| 132 | 8  | 8L132B  | 4830      | 50    | LO   | 125 | 46 | -1 | 0  | 45 |

| Dw  | N  | code    | moyeu bus | A max | type | De  | L   | P  | R  | S  |
|-----|----|---------|-----------|-------|------|-----|-----|----|----|----|
| 132 | 12 | 12L132B | 5040      | 55    | LO   | 125 | 67  | 0  | 9  | 58 |
|     | 16 | 16L132B | 5040      | 55    | LO   | 125 | 86  | 0  | 28 | 58 |
|     | 20 | 20L132B | 4830      | 50    | LO   | 125 | 105 | 0  | 60 | 45 |
| 140 | 8  | 8L140B  | 4830      | 50    | LO   | 133 | 46  | -1 | 0  | 45 |
|     | 12 | 12L140B | 5040      | 55    | LO   | 133 | 67  | 0  | 9  | 58 |
|     | 16 | 16L140B | 5040      | 55    | LO   | 133 | 86  | 0  | 28 | 58 |
|     | 20 | 20L140B | 5040      | 55    | LO   | 133 | 105 | 0  | 47 | 58 |
| 160 | 8  | 8L160B  | 4830      | 50    | LI   | 153 | 46  | -1 | 0  | 45 |
|     | 12 | 12L160B | 5040      | 55    | LO   | 153 | 67  | 0  | 9  | 58 |
|     | 16 | 16L160B | 5040      | 55    | LO   | 153 | 86  | 0  | 28 | 58 |
|     | 20 | 20L160B | 6045      | 65    | LO   | 153 | 105 | 0  | 42 | 63 |
| 180 | 8  | 8L180B  | 5040      | 55    | LI   | 173 | 46  | 12 | 0  | 58 |
|     | 12 | 12L180B | 5040      | 55    | LO   | 173 | 67  | 0  | 9  | 58 |
|     | 16 | 16L180B | 5040      | 55    | LI   | 173 | 86  | 0  | 28 | 58 |
|     | 20 | 20L180B | 7060      | 75    | LO   | 173 | 105 | 0  | 26 | 79 |
| 200 | 8  | 8L200B  | 5040      | 55    | LI   | 193 | 46  | 12 | 0  | 58 |
|     | 12 | 12L200B | 5040      | 55    | LI   | 193 | 67  | 0  | 9  | 58 |
|     | 16 | 16L200B | 5040      | 55    | LI   | 193 | 86  | 0  | 28 | 58 |
|     | 20 | 20L200B | 7060      | 75    | LO   | 193 | 105 | 0  | 26 | 79 |
| 224 | 8  | 8L224B  | 5040      | 55    | LI   | 217 | 46  | 12 | 0  | 58 |
|     | 12 | 12L224B | 6045      | 65    | LI   | 217 | 67  | 0  | 4  | 63 |
|     | 16 | 16L224B | 6045      | 65    | LI   | 217 | 86  | 0  | 23 | 63 |
|     | 20 | 20L224B | 8070      | 85    | LO   | 217 | 105 | 0  | 17 | 88 |
| 250 | 8  | 8L250B  | 6035      | 65    | L+   | 243 | 46  | 7  | 0  | 53 |
|     | 12 | 12L250B | 6045      | 65    | L+   | 243 | 67  | 0  | 4  | 63 |
|     | 16 | 16L250B | 6045      | 65    | L+   | 243 | 86  | 0  | 23 | 63 |
|     | 20 | 20L250B | 8070      | 85    | LO   | 243 | 105 | 0  | 17 | 88 |
| 280 | 8  | 8L280B  | 6035      | 65    | L+   | 273 | 46  | 7  | 0  | 53 |
|     | 12 | 12L280B | 6045      | 65    | L+   | 273 | 67  | 0  | 4  | 63 |

# Poulies à moyeu SERAX pour courroies poly-V® SERAX schijven voor poly-V® riemen



L

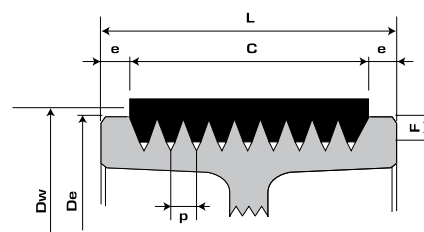
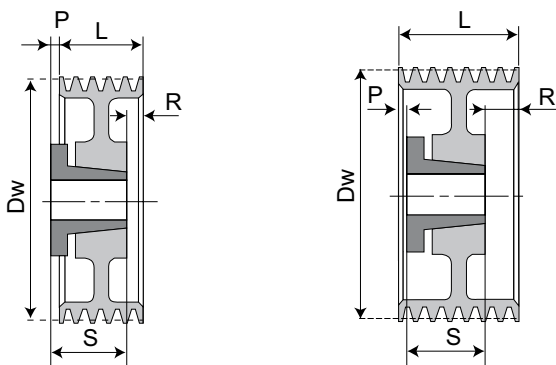
La référence poulie désigne le diamètre primitif.  
De artikelcode geeft tevens de steekcirkeldiameter aan.

Une quantité minimum de commande est requise pour certaine référence. Nous consulter.  
Voor enkele artikelen wordt een minimum afname verlangd. Gelieve ons te raadplegen

O : Poulie pleine  
Volle schijf  
I : Poulie à toile  
Bodemschijf  
+ : Poulie à bras  
Spaakschijf

| Dw  | N  | code    | moyeu bus | A max | type | De  | L   | P  | R  | S   |
|-----|----|---------|-----------|-------|------|-----|-----|----|----|-----|
| 280 | 16 | 16L280B | 6045      | 65    | L+   | 273 | 86  | 0  | 23 | 63  |
|     | 20 | 20L280B | 8070      | 85    | LI   | 273 | 105 | 0  | 17 | 88  |
| 315 | 8  | 8L315B  | 6035      | 65    | L+   | 308 | 46  | 7  | 0  | 53  |
|     | 12 | 12L315B | 6045      | 65    | L+   | 308 | 67  | 0  | 4  | 63  |
|     | 16 | 16L315B | 6045      | 65    | L+   | 308 | 86  | 0  | 23 | 63  |
|     | 20 | 20L315B | 8070      | 85    | LI   | 308 | 105 | 0  | 17 | 88  |
| 355 | 8  | 8L355B  | 6035      | 65    | L+   | 348 | 46  | 7  | 0  | 53  |
|     | 12 | 12L355B | 6045      | 65    | L+   | 348 | 67  | 0  | 4  | 63  |
|     | 16 | 16L355B | 6045      | 65    | L+   | 348 | 86  | 0  | 23 | 63  |
|     | 20 | 20L355B | 9085      | 95    | LI   | 348 | 105 | 0  | 0  | 105 |
| 400 | 8  | 8L400B  | 6035      | 65    | L+   | 393 | 46  | 7  | 0  | 53  |
|     | 12 | 12L400B | 6045      | 65    | L+   | 393 | 67  | 0  | 4  | 63  |
|     | 16 | 16L400B | 7060      | 75    | L+   | 393 | 86  | 0  | 7  | 79  |
|     | 20 | 20L400B | 9085      | 95    | L+   | 393 | 105 | 0  | 0  | 105 |
| 450 | 8  | 8L450B  | 6035      | 65    | L+   | 443 | 46  | 7  | 0  | 53  |
|     | 12 | 12L450B | 7060      | 75    | L+   | 443 | 67  | 12 | 0  | 79  |
|     | 16 | 16L450B | 7060      | 75    | L+   | 443 | 86  | 0  | 7  | 79  |
|     | 20 | 20L450B | 9085      | 95    | L+   | 443 | 105 | 0  | 0  | 105 |
| 500 | 8  | 8L500B  | 6035      | 65    | L+   | 493 | 46  | 7  | 0  | 53  |
|     | 12 | 12L500B | 7060      | 75    | L+   | 493 | 67  | 12 | 0  | 79  |
|     | 16 | 16L500B | 7060      | 75    | L+   | 493 | 86  | 0  | 7  | 79  |
|     | 20 | 20L500B | 9085      | 95    | L+   | 493 | 105 | 0  | 0  | 105 |
| 560 | 8  | 8L560B  | 7540      | 75    | L+   | 553 | 46  | 13 | 0  | 56  |
|     | 12 | 12L560B | 7060      | 75    | L+   | 553 | 67  | 12 | 0  | 79  |
|     | 16 | 16L560B | 7060      | 75    | L+   | 553 | 86  | 0  | 7  | 79  |
|     | 20 | 20L560B | 10095     | 100   | L+   | 553 | 105 | 14 | 0  | 119 |
| 630 | 8  | 8L630B  | 7540      | 75    | L+   | 623 | 46  | 13 | 0  | 59  |
|     | 12 | 12L630B | 7060      | 75    | L+   | 623 | 67  | 12 | 0  | 79  |
|     | 16 | 16L630B | 7060      | 75    | L+   | 623 | 86  | 0  | 7  | 79  |
|     | 20 | 20L630B | 10095     | 100   | L+   | 623 | 105 | 14 | 0  | 119 |

# Poulies à moyeu SERAX pour courroies poly-V® SERAX schijven voor poly-V® riemen



|              | J                              |    |    |    | L                              |    |    |    | M                               |    |    |    |
|--------------|--------------------------------|----|----|----|--------------------------------|----|----|----|---------------------------------|----|----|----|
| p (mm)       | 2.34                           |    |    |    | 4.70                           |    |    |    | 9.40                            |    |    |    |
| F (mm)       | 2.21                           |    |    |    | 5.11                           |    |    |    | 10.21                           |    |    |    |
| e (mm)       | 2.50                           |    |    |    | 5.00                           |    |    |    | 8.00                            |    |    |    |
| N (Standard) | 8                              | 12 | 16 | 20 | 8                              | 12 | 16 | 20 | 6                               | 10 | 16 | 20 |
| C            | $(p \times z) = 2.34 \times N$ |    |    |    | $(p \times z) = 4.70 \times N$ |    |    |    | $(p \times z) = 9.407 \times N$ |    |    |    |
| Dw-De (*)    | 2                              |    |    |    | 7                              |    |    |    | 10                              |    |    |    |

\* Variable suivant le fabricant / Hangt af van de fabricant

La référence poulie désigne le diamètre primitif.  
De artikelcode geeft tevens de steekcirkeldiameter aan.

Une quantité minimum de commande est requise pour certaine référence.  
Nous consulter.  
Voor enkele artikelen wordt een minimum afname verlangd.  
Gelieve ons te raadplegen

O : Poulie pleine  
Volle schijf

I : Poulie à toile  
Bodemschijf

+ : Poulie à bras  
Spaakschijf

| Dw  | N  | code    | moyeu bus | A max | type | De  | L   | P  | R   | S   |
|-----|----|---------|-----------|-------|------|-----|-----|----|-----|-----|
| 180 | 6  | 6M180B  | 5040      | 55    | LO   | 170 | 73  | 0  | 15  | 58  |
|     | 10 | 10M180B | 6045      | 65    | LO   | 170 | 112 | 0  | 49  | 63  |
|     | 16 | 16M180B | 6045      | 65    | FO   | 170 | 168 | 16 | 89  | 63  |
|     | 20 | 20M180B | 6045      | 65    | FO   | 170 | 205 | 16 | 126 | 63  |
| 190 | 6  | 6M190B  | 5040      | 55    | LO   | 180 | 73  | 0  | 15  | 58  |
|     | 10 | 10M190B | 7060      | 75    | LO   | 180 | 112 | 0  | 33  | 79  |
|     | 16 | 16M190B | 7060      | 75    | LO   | 180 | 168 | 0  | 89  | 79  |
|     | 20 | 20M190B | 7060      | 75    | LO   | 180 | 205 | 0  | 126 | 79  |
| 200 | 6  | 6M200B  | 5040      | 55    | LI   | 190 | 73  | 0  | 15  | 58  |
|     | 10 | 10M200B | 7060      | 75    | LO   | 190 | 112 | 0  | 33  | 79  |
|     | 16 | 16M200B | 8070      | 85    | FO   | 190 | 168 | 17 | 63  | 88  |
|     | 20 | 20M200B | 8070      | 85    | FO   | 190 | 205 | 17 | 100 | 88  |
| 212 | 6  | 6M212B  | 5040      | 55    | LI   | 202 | 73  | 0  | 15  | 58  |
|     | 10 | 10M212B | 8070      | 85    | LO   | 202 | 112 | 0  | 24  | 88  |
|     | 16 | 16M212B | 9085      | 95    | LO   | 202 | 168 | 0  | 63  | 105 |
|     | 20 | 20M212B | 9085      | 95    | LO   | 202 | 205 | 0  | 100 | 105 |
| 224 | 6  | 6M224B  | 5040      | 55    | LI   | 214 | 73  | 0  | 15  | 58  |
|     | 10 | 10M224B | 8070      | 85    | LO   | 214 | 112 | 0  | 24  | 88  |
|     | 16 | 16M224B | 9085      | 95    | LO   | 214 | 168 | 0  | 63  | 105 |
|     | 20 | 20M224B | 9085      | 95    | LO   | 214 | 205 | 0  | 100 | 105 |
| 250 | 6  | 6M250B  | 6045      | 65    | LI   | 240 | 73  | 0  | 10  | 63  |
|     | 10 | 10M250B | 8070      | 85    | LO   | 240 | 112 | 0  | 24  | 88  |
|     | 16 | 16M250B | 9085      | 95    | LO   | 240 | 168 | 0  | 63  | 105 |
|     | 20 | 20M250B | 9085      | 95    | LO   | 240 | 205 | 0  | 100 | 105 |
| 280 | 6  | 6M280B  | 6045      | 65    | L+   | 270 | 73  | 0  | 10  | 63  |
|     | 10 | 10M280B | 8070      | 85    | LI   | 270 | 112 | 0  | 24  | 88  |
|     | 16 | 16M280B | 9085      | 95    | LO   | 270 | 168 | 0  | 63  | 105 |
|     | 20 | 20M280B | 9085      | 95    | LO   | 270 | 205 | 0  | 100 | 105 |
| 315 | 6  | 6M315B  | 6045      | 65    | L+   | 305 | 73  | 0  | 10  | 63  |
|     | 10 | 10M315B | 9085      | 95    | LI   | 305 | 112 | 0  | 7   | 105 |

| Dw  | N  | code    | moyeu bus | A max | type | De  | L   | P  | R  | S   |
|-----|----|---------|-----------|-------|------|-----|-----|----|----|-----|
| 315 | 16 | 16M315B | 10095     | 100   | LO   | 305 | 168 | 0  | 49 | 119 |
|     | 20 | 20M315B | 10095     | 100   | LO   | 305 | 205 | 0  | 86 | 119 |
| 355 | 6  | 6M355B  | 7060      | 75    | L+   | 345 | 73  | 6  | 0  | 79  |
|     | 10 | 10M355B | 9085      | 95    | L+   | 345 | 112 | 0  | 7  | 105 |
|     | 16 | 16M355B | 10095     | 100   | LI   | 345 | 168 | 0  | 49 | 119 |
|     | 20 | 20M355B | 10095     | 100   | LI   | 345 | 205 | 0  | 86 | 119 |
| 400 | 6  | 6M400B  | 7060      | 75    | L+   | 390 | 73  | 6  | 0  | 79  |
|     | 10 | 10M400B | 9085      | 95    | L+   | 390 | 112 | 0  | 7  | 105 |
|     | 16 | 16M400B | 10095     | 100   | L+   | 390 | 168 | 0  | 49 | 119 |
|     | 20 | 20M400B | 10095     | 100   | L+   | 390 | 205 | 0  | 86 | 119 |
| 450 | 6  | 6M450B  | 7060      | 75    | L+   | 440 | 73  | 6  | 0  | 79  |
|     | 10 | 10M450B | 9085      | 95    | L+   | 440 | 112 | 0  | 7  | 105 |
|     | 16 | 16M450B | 10095     | 100   | L+   | 440 | 168 | 0  | 49 | 119 |
|     | 20 | 20M450B | 115105    | 120   | L+   | 440 | 205 | 0  | 75 | 130 |
| 500 | 6  | 6M500B  | 7060      | 75    | L+   | 490 | 73  | 6  | 0  | 79  |
|     | 10 | 10M500B | 9085      | 95    | L+   | 490 | 112 | 0  | 7  | 105 |
|     | 16 | 16M500B | 10095     | 100   | L+   | 490 | 168 | 0  | 49 | 119 |
|     | 20 | 20M500B | 115105    | 120   | L+   | 490 | 205 | 0  | 75 | 130 |
| 560 | 6  | 6M560B  | 7060      | 75    | L+   | 550 | 73  | 6  | 0  | 79  |
|     | 10 | 10M560B | 10095     | 100   | L+   | 550 | 112 | 7  | 0  | 119 |
|     | 16 | 16M560B | 115105    | 120   | L+   | 550 | 168 | 0  | 38 | 130 |
|     | 20 | 20M560B | 115105    | 120   | L+   | 550 | 205 | 0  | 75 | 130 |
| 630 | 6  | 6M630B  | 7060      | 75    | L+   | 620 | 73  | 6  | 0  | 79  |
|     | 10 | 10M630B | 10095     | 100   | L+   | 620 | 112 | 7  | 0  | 119 |
|     | 16 | 16M630B | 115105    | 120   | L+   | 620 | 168 | 0  | 38 | 130 |
|     | 20 | 20M630B | 115105    | 120   | L+   | 620 | 205 | 0  | 75 | 130 |
| 710 | 6  | 6M710B  | 8070      | 85    | L+   | 700 | 73  | 15 | 0  | 88  |
|     | 10 | 10M710B | 10095     | 100   | L+   | 700 | 112 | 7  | 0  | 119 |
|     | 16 | 16M710B | 115105    | 120   | L+   | 700 | 168 | 0  | 38 | 130 |
|     | 20 | 20M710B | 130120    | 130   | L+   | 700 | 205 | 0  | 60 | 145 |