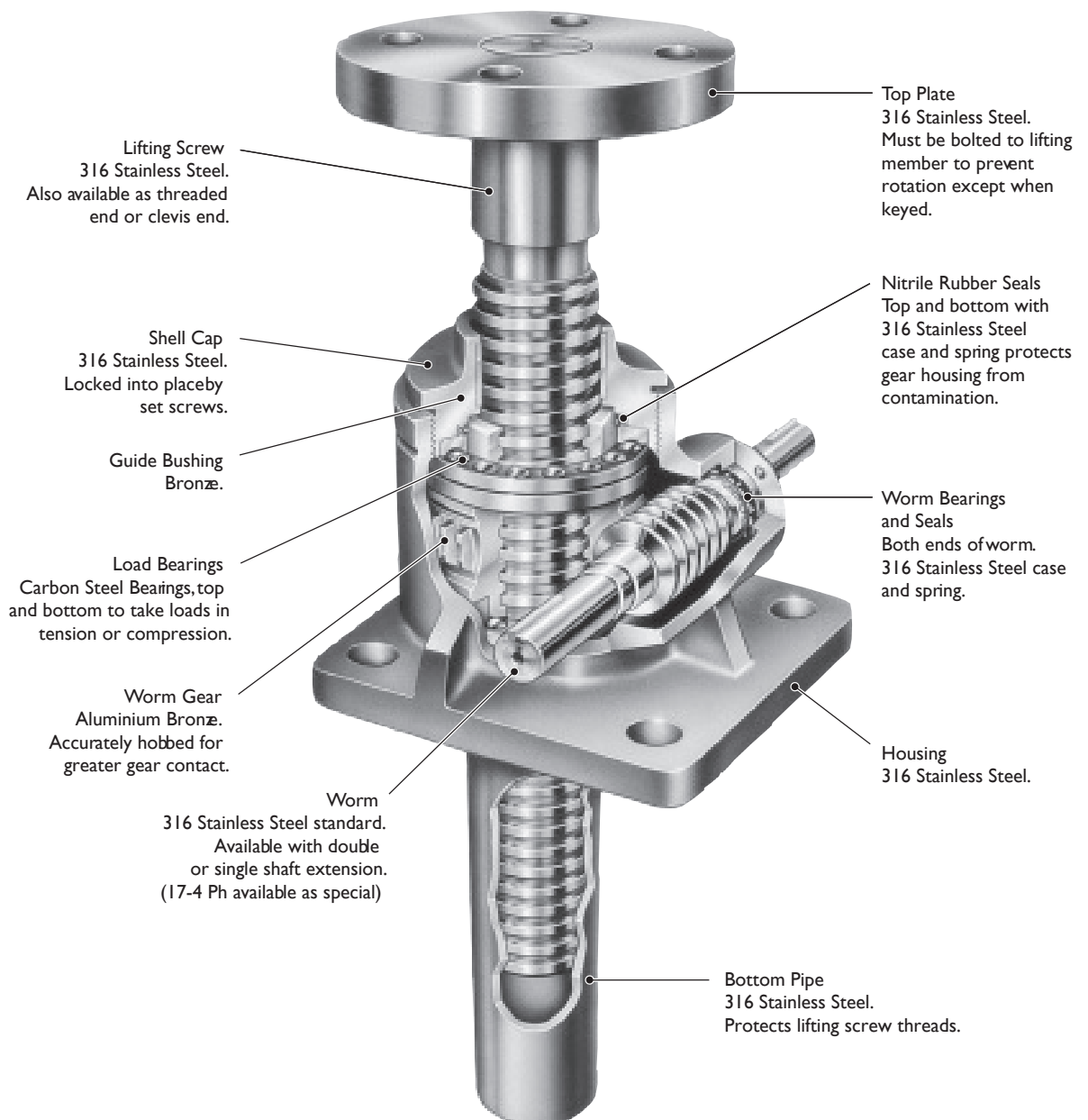


## Advantages

- Capacity from 2 Tons through to 100 Tons.
- Worm gear ratios from 6:1 to 36:1
- Corrosion resistant.
- Stainless steel hardware
- Sealed gear cavity keeps water and other contaminants out.
- Anti-Backlash models available.
- Available with keyed lifting screws for translating screw models.
- Available in upright and inverted rotating screw models with travelling nut.
- Can be retrofitted into applications where non-stainless steel screw jacks have been previously used.

## Optional Features

- Closed heights
- Materials
- Lifting screw ends
- With Stop Nuts
- Worm shaft extensions
- With bellows boots
- Lifting screw thread pitches

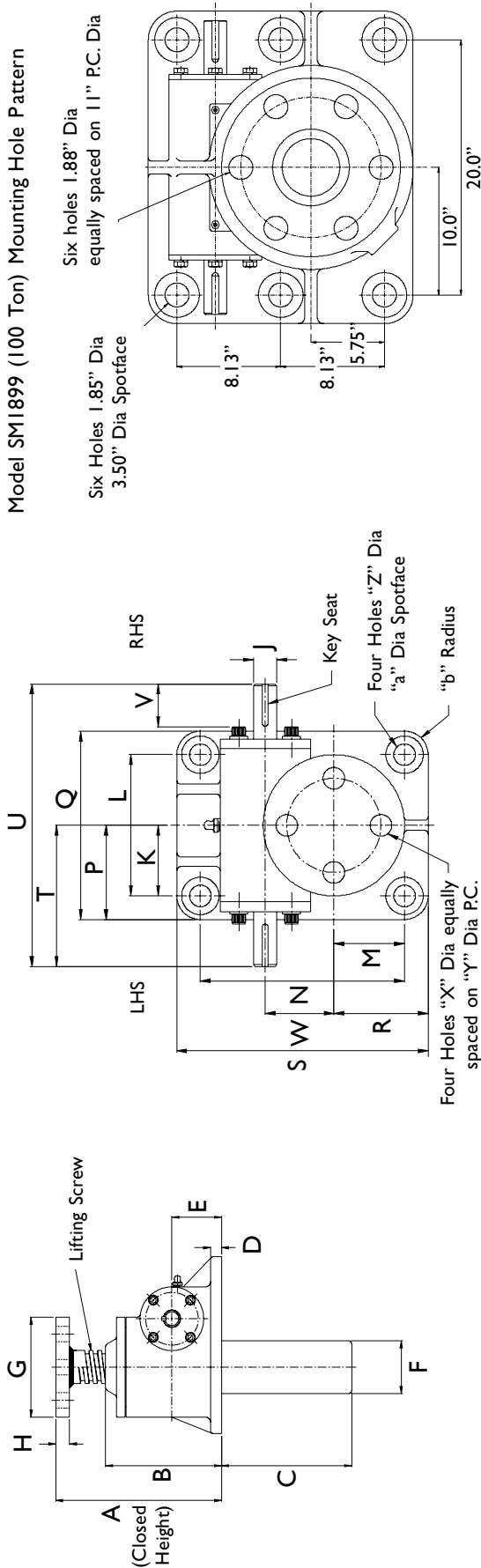


Screw Jack Model	Upright	SM-1802	SM-1805	SM-1810	SM-1815	SM-1820	SM-1825	SM-9035	SM-1850	SM-1899
	Inverted	SM-1801	SM-1804	SM-1809	SM-1814	SM-1819	SM-1824	SM-9034	SM-1849	SM-1898
Capacity (Short Tons)	Sustaining	2	5	10	15	20	25	35	50	100
	Operating**	0.66	1.66	3.33	5.00	6.66	8.33	11.66	16.66	33.33
Lifting Screw	Diameter	1	1 1/2	2	2 1/4	2 1/2	3 3/8	3 3/4	4 1/2	6
	Pitch	0.250	0.375	0.500	0.500	0.500	0.666	0.666	0.666	0.750
	Form	Acme	Square	Square	Square	Square	Square	Acme	Square	Square
Worm Gear Ratios	Std. Ratio	6:1	6:1	8:1	8:1	8:1	10 2/3:1	10 2/3:1	10 2/3:1	12:1
	Optional	24:1	24:1	24:1	24:1	24:1	32:1	32:1	32:1	36:1
Turns of Worm for 1" Raise	Std. Ratio	24	16	16	16	16	16	16	16	16
	Optional	96	64	48	48	48	48	48	48	48
Max. HP per Screw Jack	Std. Ratio	2	4	5	5	5	8	8	15	25
	Optional	1/2	3/4	1 1/2	1 1/2	1 1/2	2 1/2	2 1/2	6	11
Start-Up Torque at Operating Load* (In.-lbs)	Std. Ratio	40	150	250	475	685	665	1335	2500	5335
	Optional	17	60	135	275	390	400	800	1400	2865
Efficiency Rating	Std. Ratio	0.232	0.221	0.237	0.202	0.188	0.164	0.156	0.138	0.130
	Optional	0.133	0.121	0.151	0.129	0.120	0.092	0.089	0.083	0.080
Weight with Base Raise of 6" (lbs)		19	37	55	70	96	168	250	420	1260

\* For Loads 25% to 100% of screw jack capacity, torque requirements are approximately proportional to load.

\*\* Screw jack has been de-rated for 316 Stainless Steel worm. For full load rating use 17-4 PH worm.





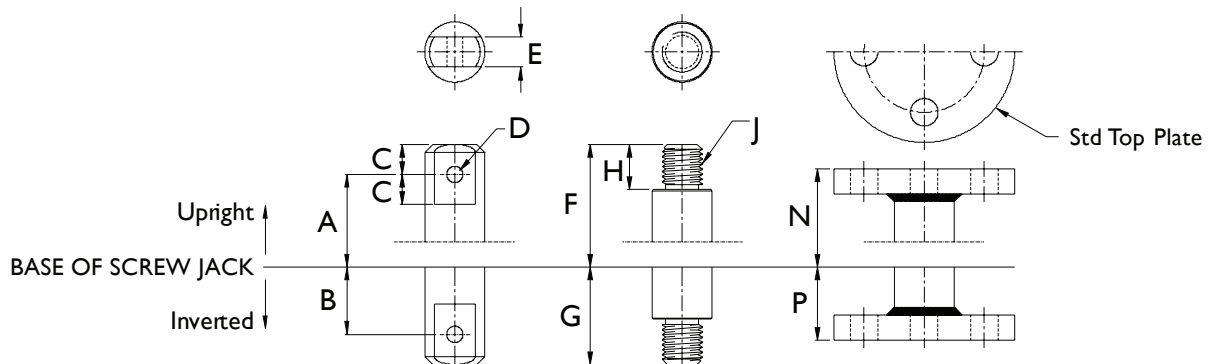
Model SM1899 (100 Ton) Mounting Hole Pattern

Model No	Capacity (Short Tons) Sustaining Operating	Dimensions in inches																				Keyseat (b x h x L)								
		A	B	C	D	E	F	G	H	J	K	L	M	N	P	Q	R	S	T	U	V		W	X	Y	Z	a	b		
SM-1802	2	0.66	5.50	4.56	Travel	.50	1.750 ±.005	1.66	4.25	.50	+000	3.00	6.00	1.00	2.00	3.5	7.00	1.75	3.5	3.5	7.00	+003	1.12	1.702	.41	3.00	.41	.75	1.5	.125 x .0060 x 1.00 LG
SM-1805	5	1.66	7.50	5.88	Travel +3/8	.50	2.250 ±.005	2.38	4.50	.60	+000	2.25	4.50	2.25	6.50	3.00	6.00	3.00	8.00	4.50	9.00	+003	1.50	2.188	.69	3.00	.69	1.19	.75	.188 x .094 x 1.25 LG
SM-1810	10	3.33	7.75	6.00	Travel +1/4	.50	2.250 ±.005	2.88	5.75	.94	+000	2.88	5.75	2.00	7.00	3.75	7.50	2.88	8.75	5.50	11.00	+003	1.80	2.598	.81	4.13	.81	1.31	.88	.250 x .125 x 1.50 LG
SM-1815	15	5.00	8.00	6.31	Travel +1/2	.63	2.750 ±.005	2.88	5.75	.94	+000	3.00	6.00	2.50	7.50	3.88	7.75	3.38	9.25	5.50	11.00	+003	1.80	2.598	.81	4.13	.81	1.38	.88	.250 x .125 x 1.50 LG
SM-1820	20	6.66	10.25	8.00	Travel -1/4	.75	3.250 ±.005	3.50	5.75	.94	+000	3.00	6.00	3.00	8.75	4.13	8.25	4.13	11.00	5.50	11.00	+003	1.50	2.598	.81	4.13	1.12	1.75	1.13	.250 x .125 x 1.50 LG
SM-1825	25	8.33	11.75	9.75	Travel +1/4	1.00	4.000 ±.005	4.50	8.50	.94	+000	3.75	7.50	3.75	11.00	5.13	10.25	5.13	13.75	7.00	14.00	+003	2.30	3.750	1.06	6.00	1.38	2.13	1.38	.313 x .156 x 2.00 LG
SM-9035	35	11.66	12.50	9.56	Travel +1/4	1.25	4.000 ±.005	4.50	10.50	1.31	+000	3.75	7.50	4.50	12.50	5.13	10.25	6.00	15.50	7.00	14.00	+003	2.10	3.750	1.62	7.75	1.62	2.63	1.38	.313 x .156 x 2.00 LG
SM-1850	50	16.66	13.50	11.38	Travel	1.25	4.750 ±.005	5.63	11.25	1.25	+000	8.00	16.00	3.00	6.00	9.88	19.75	4.88	9.75	11.00	22.00	+003	4.40	5.313	1.38	8.75	1.88	3.25	1.88	.375 x .188 x 2.25 LG
SM-1899	100	33.33	24.00	18.50	Travel +1/2	1.50	6.000 ±.005	7.00	14.00	2.94	+000	*	*	*	*	12.25	24.50	8.00	20.75	11.50	23.00	+003	3.40	7.500	*	*	*	*	*	.500 x .250 x 3.00 LG

Note: 1. Dimensions are subject to change without notice. 2. Form models SM1802 and SM-1850 style as per section I.2.3.2.

3. Dimensions in inches. 4. LHS = Left Hand Side. 5. RHS = Right Hand Side.

## Standard Stainless Steel Screw Jack Screw End Dimensions



Model No	A*	B*	C	D	E	F	G	H	J	N	P
SM-1802	5 1/4"	1 3/4"	3/4"	1 13/32"	3/4"	6.0	2 1/2"	1 1/8"	3/4" 10 UNC-2A	5.25	1 3/4"
SM-1805	7"	2 1/2"	1"	2 1/32"	1"	8.0	3 1/2"	1 1/8"	1" 8 UNC-2A	7.5	2 1/2"
SM-1810	7 1/2"	3"	1 1/4"	2 5/32"	1 1/4"	9.25	4 1/4"	1 5/8"	1 1/2" 6 UNC-2A	7.75	2 3/4"
SM-1815	8 1/2"	3"	1 1/4"	2 9/32"	1 1/2"	10.25	4 1/4"	2"	1 3/4" 5 UNC-2A	8.5	2 3/4"
SM-1820	10"	3 1/2"	1 1/2"	1 1/32"	1 3/4"	12.5	5"	2 1/4"	2" 4 1/2 UNC-2A	10.25	3"
SM-1825	12"	4"	1 3/4"	1 9/32"	2 1/4"	14.5	5 3/4"	3 1/4"	2 1/2" 4 UNC-2A	11.75	3"
SM-9035	13"	5"	2"	1 17/32"	2 1/2"	15.5	7"	3 3/4"	3 1/4" 4 UNC-2A	12.5	4"
SM-1850	15"	5 1/2"	2 1/2"	1 21/32"	3 1/4"	18.0	8"	4 1/4"	4" 4 UNC-2A	13.5	3 1/2"
SM-1899	24"	9"	3"	2 17/32"	4 1/4"	25.0	12"	5"	4 1/2" 12 UNC-2A	24.0	12"

- Note
- \* Closed height dimensions may increase for screw jack units supplied with bellows boots Consult Power Jacks Ltd.
  - Lifting screw listed above are not keyed. Must be held to prevent rotation.
  - Keyed lifting screws and keyed anti-backlash models are also available. Consult Power Jacks Ltd.
  - All dimensions in inches
  - Dimensions are subject to change without notice.

